

# London - Pendant

AIP8411 23.50 in

**SPI**LIGHTING

PROJECT DETAILS

JOB NAME:

TYPE:

NOTES:

## DESCRIPTION

London is part of our classic bowl collection, hallmarked by the proven simplicity and purity of timeless geometry. It features a deeper shape ideal for mid to high height ceiling applications. The family includes pendant, chandelier, wall-mounted, and ceiling models to illuminate and enhance the visual environment.

## FEATURES & BENEFITS

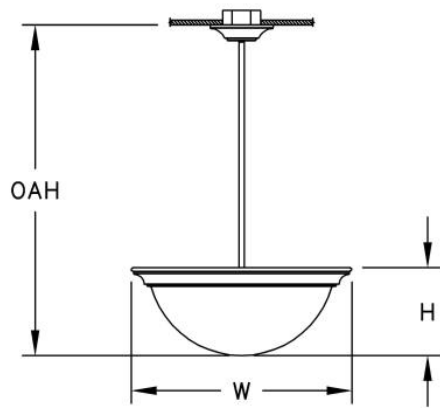
- Opal acrylic diffuser lens enhances a space with filtered illumination
- Spun metal trim ring adds high-quality, decorative element to fixture
- Handcrafted in USA

## SPECIFICATIONS

- **LIGHT SOURCE:** White LED light engine or incandescent
- **CRI:** 90+HE
- **Lumen Maintenance:** L70 = >50,000 Hrs.
- **CCT:** Available LED color temperatures: 2700K, 3000K, 3500K, 4000K, 5000K
- **DRIVER:** LED versions feature integral Class 2 power supply standard
- **DIMMING:** 0-10V controls standard to 1% on LED light engines
- **CONTROLS:** Contact factory for control options (e.g., Lutron Athena, Current NX, nLight, Enlighted, Encelium, Wattstopper, WaveLinx, or Casambi)
- **EMERGENCY:** Remote battery option is provided with 10W Constant Power Battery back-up, providing 90 Minutes of Emergency operation. Contact factory for other Emergency options.
- **DIFFUSER:** Opal acrylic is standard; matte acrylic and hand painted lenses optional. Any upward facing LEDs will be covered with a protective lens.
- **MODIFICATIONS:** Consult factory for all modification requests
- **APPROVALS:** ETL listed to UL standards (US & Canada) for use in damp locations; not recommended for exterior applications



DIMENSIONS



|                            |          |            |
|----------------------------|----------|------------|
| <b>W</b>                   | <b>H</b> | <b>OAH</b> |
| 23.5 in                    | 9.2 in   | 35 in      |
| 59.7 cm                    | 23.4 cm  | 88.9 cm    |
| <b>Mounting Weight</b>     |          |            |
| Approximate: 50 lb (23 kg) |          |            |

CONFIGURATOR

To configure your spec sheet online, go to [www.spilighting.com/AIP8411](http://www.spilighting.com/AIP8411). Not all options are available in all configurations; consult factory for details.

Required Field \*

|         |               |                 |          |               |     |           |           |           |              |         |                             |
|---------|---------------|-----------------|----------|---------------|-----|-----------|-----------|-----------|--------------|---------|-----------------------------|
| Catalog | Light Source* | Primary Finish* | Voltage* | Lamp Options* | CRI | Diffuser* | Mounting* | Emergency | Bowl Options | Options | Other Than Standard Options |
| AIP8411 |               |                 |          |               |     |           |           |           |              |         |                             |
|         |               |                 |          |               |     |           |           |           | Finish:      | Finish: |                             |
|         | A             |                 | B        | C             | D   | E         | F         | G         | H            | I       | J                           |

A - LIGHT SOURCE \*

To ensure color consistency, SPI uses precise bin selection and strict quality processes to maintain a 3-step (MacAdam) SDCM on all white LED lampings. Published LED luminaire wattages are calculated using a typical power supply efficiency of 88%; exact wattages may vary based on application.

- ☐ **L50W** | White 50W LED Light Engine | Delivered Lumens: 4,968
- ☐ **L100W** | White 100W LED Light Engine | Delivered Lumens: 9,935
- ☐ **1N300** <sup>1</sup> | 1INC300W/PS30
- ☐ **Cust\_Out** |

**Lumen Calculator:** Enter Lumens or Watts if different than displayed

LU Min 4950 - Max 9900

W Min 50.0 - Max 100.0

See last page for finish options

<sup>1</sup>Incandescent Lamp(s) Not Included  
\*For requests outside Min-Max range, please contact factory.

B - VOLTAGE \*

- ☐ 120-277V | Universal Voltage
- ☐ 120V <sup>2</sup> | 120 Volt

<sup>2</sup> For incandescent light source only

C - LAMP OPTIONS \*

Apply multiplier from chart for delivered lumens at other CCT's and CRI's. Not required with incandescent.

- ☐ 2700K | 2700K CCT
- ☐ 3000K | 3000K CCT
- ☐ 3500K | 3500K CCT
- ☐ 4000K | 4000K CCT
- ☐ 5000K | 5000K CCT

D - CRI

- ☐ 90+HE | 90+ High Efficacy

E - DIFFUSER \*

- ☐ DF\_OA | Opal Acrylic Diffuser Lens (default)
- ☐ HP01 | Silver Hand Painted Acrylic Diffuser
- ☐ HP02 | Beige Hand Painted Acrylic Diffuser
- ☐ HP03 | Amber Hand Painted Acrylic Diffuser
- ☐ MA01 | Matte Acrylic Diffuser Lens



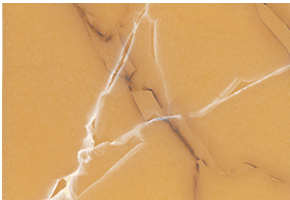
OA



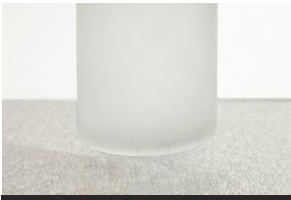
HP01



HP02



HP03



MA01

F - MOUNTING \*

Mounts to standard 4" octagonal junction box with auxiliary mounting holes. Canopy is 6.5" diameter with a 45 degree swivel.

- ☐ DF\_STM | Stem Mount (default)

G - EMERGENCY

10W, Constant Power Battery Back-up, with 90 minutes of emergency operation. EMR includes damp location enclosure for Battery back-up.

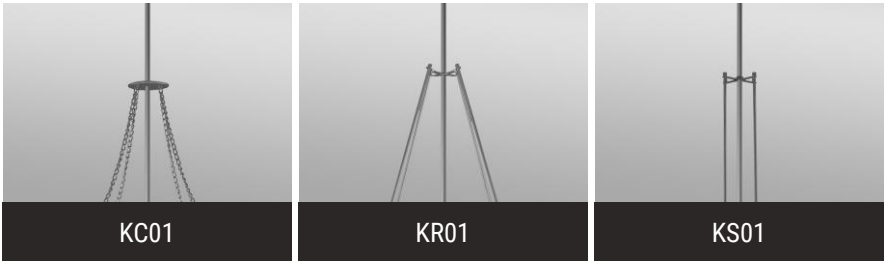
- ☐ EMR | Emergency Battery Remote

## H - BOWL OPTIONS

☐ FIN | Finial (See last page for finish options)

## I - OPTIONS

- ☐ KC01 | Chain Kit (to Transition Plate) (See last page for finish options)
- ☐ KR01 | Angled Stem Multi Kit (to Transition Plate) (See last page for finish options)
- ☐ KS01 | Straight Stem Multi Kit (to Transition Plate) (See last page for finish options)
- ☐ F | Fusing



## J - OTHER THAN STANDARD OPTIONS

Specify overall height required from ceiling to the bottom of the fixture.

OAH | Pendant suspension length other than standard

## Standard Finishes

The colors shown are representative. Their actual appearance may vary due to differences in display settings. You can request color chips by emailing [contact@spilighting.com](mailto:contact@spilighting.com). Please note, finishes may not be available in all configurations.

### Paint Colors

|   |  |   |   |   |
|---|--|---|---|---|
| <b>PT01</b><br>RAL9003 Signal White (Gloss)     | <b>PT51</b><br>Matte White (Textured)          | <b>PT02</b><br>White (Textured)                 | <b>PT04</b><br>RAL9001 Cream (Textured)           | <b>PT67</b><br>RAL7044 Silk Grey (Textured)     |
| <b>PT53</b><br>RAL7035 Light Grey (Textured)    | <b>PT54</b><br>RAL7037 Dusty Grey (Textured)   | <b>PT55</b><br>RAL7012 Basalt Grey (Textured)   | <b>PT56</b><br>RAL7016 Anthracite Grey (Textured) | <b>PT11</b><br>Black (Textured)                 |
| <b>PT57</b><br>RAL1015 Light Ivory (Textured)   | <b>PT58</b><br>RAL8004 Copper Brown (Textured) | <b>PT59</b><br>RAL6021 Pale Green (Textured)    | <b>PT60</b><br>RAL1019 Grey Beige (Textured)      | <b>PT61</b><br>RAL7006 Beige Grey (Textured)    |
| <b>PT62</b><br>RAL1003 Signal Yellow (Textured) | <b>PT63</b><br>RAL3001 Signal Red (Textured)   | <b>PT64</b><br>RAL6001 Emerald Green (Textured) | <b>PT65</b><br>RAL5005 Signal Blue (Textured)     | <b>PT66</b><br>RAL5003 Sapphire Blue (Textured) |

### Metallic Paint Colors

|   |  |  |   |   |
|---|--|--|---|---|
| <b>PT22</b><br>Platinum (Metallic Gloss)    | <b>PT48</b><br>Brass (Metallic Textured) | <b>PT28</b><br>Dark Stainless (Metallic Gloss) | <b>PT49</b><br>Bronze (Metallic Textured) | <b>PT32</b><br>Dark Bronze (Metallic Gloss) |
| <b>PT46</b><br>Aluminum (Metallic Textured) |  |  |   |   |

### Brushed Aluminum

|                                |
|--------------------------------|
| <b>BAL</b><br>Brushed Aluminum |
|--------------------------------|

### Brushed Brass

|                                   |
|-----------------------------------|
| <b>BBR</b><br>Brushed Solid Brass |
|-----------------------------------|

### Polished-Tinted Brass

|                                     |                                  |                              |
|-------------------------------------|----------------------------------|------------------------------|
| <b>ATBR</b><br>Antique Tinted Brass | <b>DTBR</b><br>Dark Tinted Brass | <b>PBR</b><br>Polished Brass |
|-------------------------------------|----------------------------------|------------------------------|

### Plated Steel

|   |   |                                    |  |                                   |
|---|---|------------------------------------|--|-----------------------------------|
| <b>ANST</b><br>Antique Brass Plated Steel | <b>BBST</b><br>Brushed Brass Plated Steel | <b>CPST</b><br>Chrome Plated Steel | <b>PBST</b><br>Polished Brass Plated Steel | <b>SNST</b><br>Satin Nickel Steel |
|---|---|------------------------------------|--|-----------------------------------|

### Polished Plated Brass

|   |  |
|---|--|
| <b>CPBR</b><br>Chrome Plated Polished Brass | <b>SNBR</b><br>Satin Nickel Plated Brass |
|---|--|

# Specialty Finishes

---



More RAL®, Pantone®, and custom finishes are available upon request. Setup fee and additional lead time applies. Call factory for details.