

# Harbor - Medallion

AIW8280 18.00 in

JOB NAME:

TYPE:

NOTES:

## DESCRIPTION

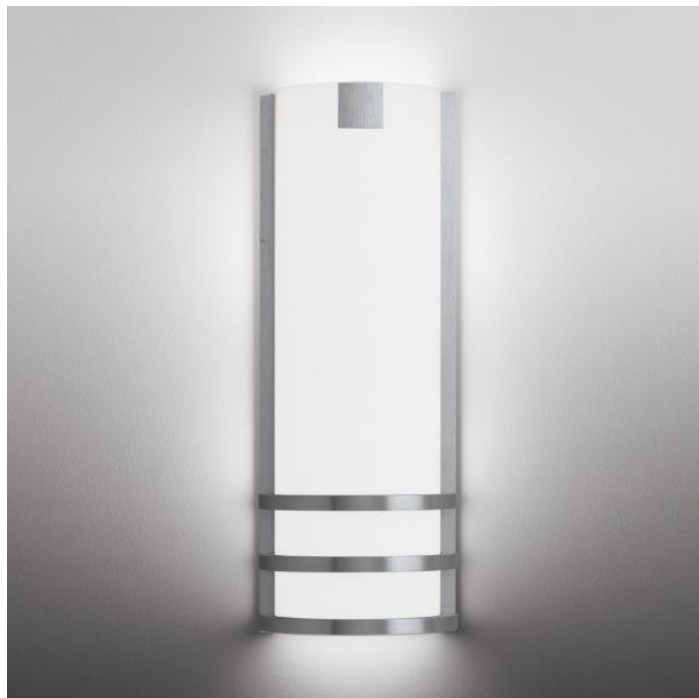
The Harbor series sconce is available with a wide variety of adornment. Highlighting the fixture are three 1/2" horizontal solid brass bars and a decorative medallion.

## FEATURES & BENEFITS

- Solid metal accents add high-quality, decorative element to fixture
- Compliant with Americans with Disabilities Act (ADA) requirements
- Optional VAN (vanity mount) features solid end caps for a fully enclosed fixture
- Exterior family fixtures available to carry a consistent lighting design throughout a project
- Handcrafted in USA

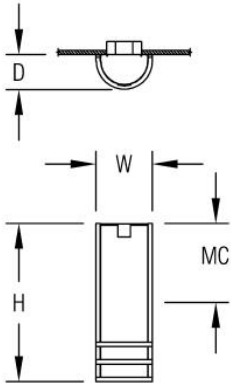
## SPECIFICATIONS

- **LIGHT SOURCE:** White LED light engine
- **CRI:** 90+HE
- **LUMEN MAINTENANCE:** L70 = >50,000 Hrs.
- **CCT:** 2700K, 3000K, 3500K, 4000K, 5000K
- **DRIVER:** Integral Class 2 power supply standard
- **DIMMING:** 1% minimum dim level standard
- **CONTROLS:** 0-10V standard. Lutron Athena and nLight AIR optional. Contact factory for other controls (e.g., Enlighted, Encelium, Wattstopper, WaveLinx, Current NX, or Casambi)
- **EMERGENCY:** Remote battery option is provided with 10W Constant Power Battery back-up, providing 90 Minutes of Emergency operation. Contact factory for other Emergency options.
- **DIFFUSER:** Formed opal acrylic lens; matte acrylic optional. Prismatic top lens and bottom lens standard with any LED module. They shield direct view of the lamp in applications where views above or below the fixture are possible and prevent external objects from entering the fixture.
- **MOUNTING:** Mounts to standard 4" octagonal junction box



- **MODIFICATIONS:** Consult factory for all modification requests
- **APPROVALS:** ETL listed to UL standards (US & Canada) for use in damp locations; not recommended for exterior applications

## DIMENSIONS



<b>W</b>	<b>H</b>	<b>D</b>	<b>MC</b>
7 in	18 in	4 in	9 in
17.8 cm	45.7 cm	10.2 cm	22.9 cm

**Mounting Weight**  
Approximate: 25 lb (12 kg)

## CONFIGURATOR

To configure your spec sheet online, go to [www.spilighting.com/AIW8280](http://www.spilighting.com/AIW8280). Not all options are available in all configurations; consult factory for details.

### Required Field \*

Catalog	Light Source*	Primary Finish*	Voltage*	Lamp Options*	CRI	Controls*	Diffuser*	Mounting	Emergency
AIW8280									
	A	B	C	D	E	F	G	H	
							Finish:		

## A - LIGHT SOURCE \*

---

To ensure color consistency, SPI uses precise bin selection and strict quality processes to maintain a 3-step (MacAdam) SDCM on all white LED lampings. Published LED luminaire wattages are calculated using a typical power supply efficiency of 88%; exact wattages may vary based on application.

**L29W** | White 29W LED Light Engine | Delivered Lumens: 1,966

**L14W** | White 14W LED Light Engine | Delivered Lumens: 983

**Cust\_Out** |

**Lumen Calculator:** Enter Lumens or Watts if different than displayed

LU Min 966 - Max 2001

W Min 14.0 - Max 29.0

[See last page for finish options](#)

\*For requests outside Min-Max range, please contact factory.

## B - VOLTAGE \*

---

120-277V | Universal Voltage

## C - LAMP OPTIONS \*

---

2700K | 2700K CCT

3000K | 3000K CCT

3500K | 3500K CCT

4000K | 4000K CCT

5000K | 5000K CCT

## D - CRI

---

90+HE | 90+ High Efficacy

## E - CONTROLS \*

---

Extended lead times may apply for controls other than 0-10V. Contact factory for additional control options such as Enlighted, Encelium, Wattstopper, WaveLinx, Casambi, Current NX, or others.

DF\_DIM1 | 0-10V Control, 1% Dimming (default)

AWRN | Lutron Athena Wireless Node, 1% Dimming

NLTA | Acuity nLight Air, 1% Dimming

## F - DIFFUSER \*

---

DF\_OA | Opal Acrylic Diffuser Lens (default)

MA01 | Matte Acrylic Diffuser Lens



## G - MOUNTING

---

Vanity mount features solid end caps.

VAN | Vanity Mount (See last page for finish options)

## H - EMERGENCY

---

10W, Constant Power Battery Back-up, with 90 minutes of emergency operation. EMR includes damp location enclosure for Battery back-up.

EMR | Emergency Battery Remote

## Standard Finishes

The colors shown are representative. Their actual appearance may vary due to differences in display settings. You can request color chips by emailing [contact@spilighting.com](mailto:contact@spilighting.com). Please note, finishes may not be available in all configurations.

### Paint Colors

<b>PT01</b> RAL9003 Signal White (Gloss)	<b>PT51</b> Matte White (Textured)	<b>PT02</b> White (Textured)	<b>PT04</b> RAL9001 Cream (Textured)	<b>PT67</b> RAL7044 Silk Grey (Textured)
<b>PT53</b> RAL7035 Light Grey (Textured)	<b>PT54</b> RAL7037 Dusty Grey (Textured)	<b>PT55</b> RAL7012 Basalt Grey (Textured)	<b>PT56</b> RAL7016 Anthracite Grey (Textured)	<b>PT11</b> Black (Textured)
<b>PT57</b> RAL1015 Light Ivory (Textured)	<b>PT58</b> RAL8004 Copper Brown (Textured)	<b>PT59</b> RAL6021 Pale Green (Textured)	<b>PT60</b> RAL1019 Grey Beige (Textured)	<b>PT61</b> RAL7006 Beige Grey (Textured)
<b>PT62</b> RAL1003 Signal Yellow (Textured)	<b>PT63</b> RAL3001 Signal Red (Textured)	<b>PT64</b> RAL6001 Emerald Green (Textured)	<b>PT65</b> RAL5005 Signal Blue (Textured)	<b>PT66</b> RAL5003 Sapphire Blue (Textured)

### Brushed Copper

<b>BCU</b> Brushed Solid Copper	
------------------------------------	---

### Metallic Paint Colors

<b>PT22</b> Platinum (Metallic Gloss)	<b>PT48</b> Brass (Metallic Textured)	<b>PT28</b> Dark Stainless (Metallic Gloss)	<b>PT49</b> Bronze (Metallic Textured)	<b>PT32</b> Dark Bronze (Metallic Gloss)
<b>PT46</b> Aluminum (Metallic Textured)				

### Polished Copper

<b>PCU</b> Polished Solid Copper	
-------------------------------------	---

### Brushed Aluminum

<b>BAL</b> Brushed Aluminum	
--------------------------------	---

### Brushed Brass

<b>BBR</b> Brushed Solid Brass	
-----------------------------------	---

### Polished-Tinted Brass

<b>ATBR</b> Antique Tinted Brass	<b>DTBR</b> Dark Tinted Brass	<b>PBR</b> Polished Brass
-------------------------------------	----------------------------------	------------------------------

### Polished Plated Brass

<b>CPBR</b> Chrome Plated Polished Brass	<b>SNBR</b> Satin Nickel Plated Brass
---	--

## Specialty Finishes

---



More RAL®, Pantone®, and custom finishes are available upon request. Setup fee and additional lead time applies. Call factory for details.