

York - 12"

AIW8331 12.00 in

SPILIGHTING

PROJECT DETAILS

JOB NAME:

TYPE:

NOTES:

DESCRIPTION

The York is a simple but elegant sconce that can either be used as a decorative element or be painted to disappear in the space. The fixture can be designed for any application where elegance is important. Choose from a palette of both painted and metal finishes.

FEATURES & BENEFITS

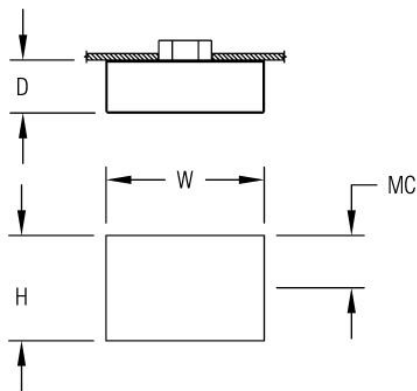
- Compliant with Americans with Disabilities Act (ADA) requirements
- Versatile design allows fixture to be mounted in any orientation
- Handcrafted in USA

SPECIFICATIONS

- **LIGHT SOURCE:** White LED light engine or incandescent
- **CRI:** 90+HE
- **Lumen Maintenance:** L70 = >50,000 Hrs.
- **CCT:** Available LED color temperatures: 2700K, 3000K, 3500K, 4000K, 5000K
- **DRIVER:** LED versions feature integral Class 2 power supply standard
- **DIMMING:** 0-10V controls standard to 1% on LED light engines
- **CONTROLS:** Contact factory for control options (e.g., Lutron Athena, Current NX, nLight, Enlighted, Encelium, Wattstopper, WaveLinx, or Casambi)
- **EMERGENCY:** Remote battery option is provided with 10W Constant Power Battery back-up, providing 90 Minutes of Emergency operation. Contact factory for other Emergency options.
- **CONSTRUCTION:** Formed metal construction provides durable protection for internal components and is recyclable
- **MOUNTING:** Mounts to standard 4" octagonal junction box
- **MODIFICATIONS:** Consult factory for all modification requests
- **APPROVALS:** ETL listed to UL standards (US & Canada) for use in damp locations; not recommended for exterior applications



DIMENSIONS



| | | | |
|--------------------------|---------|---------|---------|
| W | H | D | MC |
| 12 in | 8 in | 4 in | 4 in |
| 30.5 cm | 20.3 cm | 10.2 cm | 10.2 cm |
| Mounting Weight | | | |
| Approximate: 5 lb (3 kg) | | | |

CONFIGURATOR

To configure your spec sheet online, go to www.spilighting.com/AIW8331. Not all options are available in all configurations; consult factory for details.

Required Field *

| | | | | | | | | |
|---------|---------------|-----------------|----------|---------------|------|-----------|-------------------|------|
| Catalog | Light Source* | Primary Finish* | Voltage* | Lamp Options* | CRI* | Emergency | Faceplate Options | Lens |
| AIW8331 | | | | | | | | |
| | A | | B | C | D | E | F | G |

A - LIGHT SOURCE *

To ensure color consistency, SPI uses precise bin selection and strict quality processes to maintain a 3-step (MacAdam) SDCM on all white LED lampings. Published LED luminaire wattages are calculated using a typical power supply efficiency of 88%; exact wattages may vary based on application. Alternative wattages available upon request.

- ☐ **L7W** | White 7W LED Light Engine | Delivered Lumens: 509
- ☐ **L14W** | White 14W LED Light Engine | Delivered Lumens: 1,017
- ☐ **2N60** ¹ | 2INC60W/T10/MED
- ☐ **Cust_Out** |

Lumen Calculator: Enter Lumens or Watts if different than displayed

| | | |
|--|----|--------------------|
| | LU | Min 508 - Max 1016 |
| | W | Min 7.0 - Max 14.0 |

See last page for finish options

¹Incandescent Lamp(s) Not Included
*For requests outside Min-Max range, please contact factory.

B - VOLTAGE *

- ☐ 120-277V | Universal Voltage
- ☐ 120V ² | 120 Volt

² For incandescent light source only

C - LAMP OPTIONS *

Apply multiplier from chart for delivered lumens at other CCT’s and CRI’s. Not required with incandescent.

- ☐ 2700K | 2700K CCT
- ☐ 3000K | 3000K CCT
- ☐ 3500K | 3500K CCT
- ☐ 4000K | 4000K CCT
- ☐ 5000K | 5000K CCT

D - CRI *

- ☐ DF_90+HE | 90+ High Efficacy

E - EMERGENCY

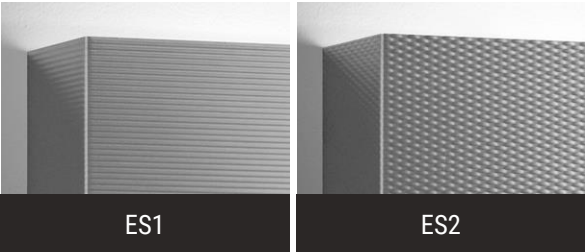
10W, Constant Power Battery Back-up, with 90 minutes of emergency operation. EMR includes damp location enclosure for Battery back-up.

- ☐ EMR | Emergency Battery Remote

F - FACEPLATE OPTIONS

Patterned stainless steel faceplates cannot be painted or metal finished. Please leave the primary finish BLANK when specifying this option.

- ☐ ES1 | Embossed Stainless Steel-Linear Pattern
- ☐ ES2 | Embossed Stainless Steel-Cross Hatch Pattern



G - LENS

Top lens and bottom lens standard with any LED module. Choose option only if specifying incandescent.

- ☐ TL | Top Lens

Standard Finishes

The colors shown are representative. Their actual appearance may vary due to differences in display settings. You can request color chips by emailing contact@spilighting.com. Please note, finishes may not be available in all configurations.

Paint Colors

| | | | | |
|---|--|---|---|---|
| PT01 RAL9003 Signal White (Gloss) | PT51 Matte White (Textured) | PT02 White (Textured) | PT04 RAL9001 Cream (Textured) | PT67 RAL7044 Silk Grey (Textured) |
| PT53 RAL7035 Light Grey (Textured) | PT54 RAL7037 Dusty Grey (Textured) | PT55 RAL7012 Basalt Grey (Textured) | PT56 RAL7016 Anthracite Grey (Textured) | PT11 Black (Textured) |
| PT57 RAL1015 Light Ivory (Textured) | PT58 RAL8004 Copper Brown (Textured) | PT59 RAL6021 Pale Green (Textured) | PT60 RAL1019 Grey Beige (Textured) | PT61 RAL7006 Beige Grey (Textured) |
| PT62 RAL1003 Signal Yellow (Textured) | PT63 RAL3001 Signal Red (Textured) | PT64 RAL6001 Emerald Green (Textured) | PT65 RAL5005 Signal Blue (Textured) | PT66 RAL5003 Sapphire Blue (Textured) |

Brushed Copper

| | |
|------------------------------------|--|
| BCU Brushed Solid Copper | |
|------------------------------------|--|

Brushed Stainless

| | |
|---------------------------------------|--|
| BSS Brushed Stainless Steel | |
|---------------------------------------|--|

Metallic Paint Colors

| | | | | |
|---|--|--|---|---|
| PT22 Platinum (Metallic Gloss) | PT48 Brass (Metallic Textured) | PT28 Dark Stainless (Metallic Gloss) | PT49 Bronze (Metallic Textured) | PT32 Dark Bronze (Metallic Gloss) |
| PT46 Aluminum (Metallic Textured) | | | | |

Brushed Aluminum

| | |
|--------------------------------|--|
| BAL Brushed Aluminum | |
|--------------------------------|--|

Brushed Brass

| | |
|-----------------------------------|--|
| BBR Brushed Solid Brass | |
|-----------------------------------|--|

Specialty Finishes



More RAL®, Pantone®, and custom finishes are available upon request. Setup fee and additional lead time applies. Call factory for details.