

Echo Blade - Exterior

EEW12171 15.50 in

JOB NAME:

TYPE:

NOTES:

DESCRIPTION

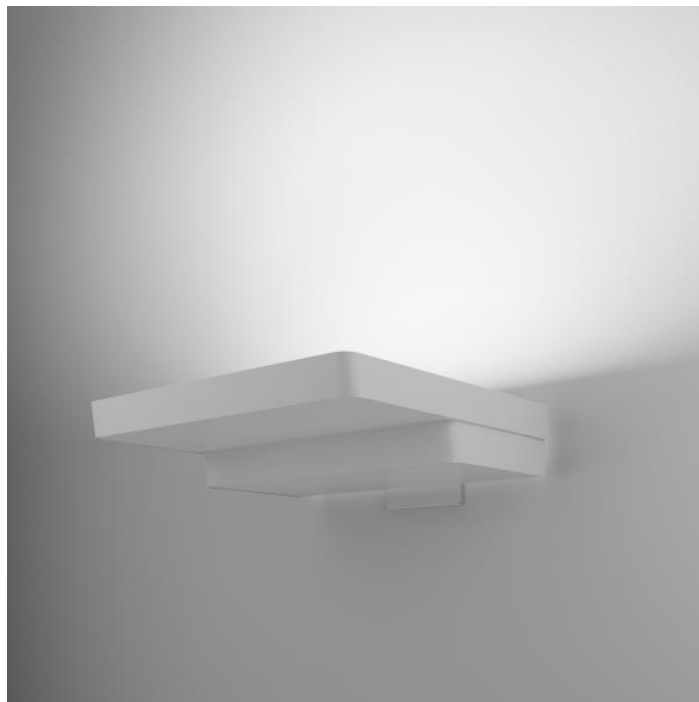
Echo Blade is the slimmest, most discreet high output asymmetric lighting tool on the market. It combines high output density with outstanding quality in a sleek, new architectural form that performs as great as it looks. With a profile just over 3", SPI Lighting's Echo Blade can deliver from 11,000 to 33,000 lumens. Specially constructed for wet locations, this IP66 rated luminaire is ideal for illuminating canopies with comfortable, glare-free light. For a complimentary lighting layout, contact our applications team at SPITeam@spilighting.com.

FEATURES & BENEFITS

- Increase visual comfort, eliminate source brightness, and improve light uniformity with indirect lighting
- A true asymmetric with high-efficiency optics
- Efficacy up to 102 lm/W
- Optional backlight shielding available
- Full horizontal cut-off
- Minimal projection off the wall
- Delivers a smooth, consistent beam pattern of even white light suitable for highly-finished ceilings and walls
- Top lens removes striations and corrects for color-over-angle
- Natatorium-rated: Durable aluminum housing, minimum 2 mils powder coat paint finish, corrosion-resistant fasteners, sealed LED modules, and fully potted power supply(s) sealed with epoxy
- Handcrafted in USA, BABA Compliant

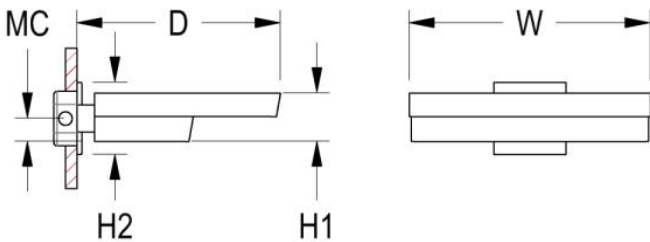
SPECIFICATIONS

- **LIGHT SOURCE:** White LED light engine
- **CRI:** 80+ or 90+
- **ORIENTATION:** Indirect or direct
- **LUMEN MAINTENANCE:** L90 = >72,000 Hrs at 40°C ambient temperature
- **EFFICACY:** Up to 102 lm/W delivered
- **CCT:** 2700K, 3000K, 3500K, 4000K, 5000K
- **VOLTAGE:** 120-277V standard



- **DRIVER:** Includes integral Class 2 power supplies
- **MAX AMBIENT OPERATING TEMP:** 40°C (104°F)
- **DIMMING:** 0-10V controls standard to 1%
- **CONTROLS:** Contact factory for control options (e.g., Lutron Athena, Current NX, nLight, Enlighted, Encelium, Wattstopper, WaveLinx, or Casambi).
- **EMERGENCY:** Remote battery option is provided with 10W Constant Power Battery back-up, providing 90 Minutes of Emergency operation. Contact factory for other Emergency options.
- **INTEGRATED SURGE PROTECTION:** LED components are protected against minor surge events
- **CONSTRUCTION:** Aluminum construction; precision injection molded optics
- **FINISH:** Choose from 26 standard thermoset polyester powder coat paint colors. RAL®, Pantone®, or custom finishes available upon request.
- **MODIFICATIONS:** Consult factory for all modification requests
- **APPROVALS:** ETL listed to UL standards (US & Canada) for use in wet locations; suitable for interior or exterior use. IP66 rated fixture per International Electrotechnical Commission (IEC) certifies fixture as dust-tight and protected against powerful water jets.

DIMENSIONS



W	H1	H2	D	MC
15.5 in	3.1 in	4.6 in	13.1 in	2.3 in
39.4 cm	7.9 cm	11.7 cm	33.3 cm	5.8 cm

Mounting Weight
Approximate: 15 lb (7 kg)

CONFIGURATOR

To configure your spec sheet online, go to www.spilighting.com/EEW12171. Not all options are available in all configurations; consult factory for details.

Required Field *

Catalog EEW12171	Light Source*	Primary Finish*	Voltage*	Lamp Options*	CRI*	Mounting	Emergency	Optical Distribution*	Options
	A		B	C	D	E	F	G	H

A - LIGHT SOURCE *

To ensure color consistency, SPI uses precise bin selection and strict quality processes to maintain a 3-step (MacAdam) SDCM on all white LED lampings. Published LED luminaire wattages are calculated using a typical power supply efficiency of 88%; exact wattages may vary based on application. Delivered lumens shown are with the Wide Asymmetric (WA) optical package; apply multiplier for alternate distribution.

L108W | White 108W LED Light Engine | Delivered Lumens: 10,994

Cust_Out |

Lumen Calculator: Enter Lumens or Watts if different than displayed

LU Min 5497 - Max 10994

W Min 54.0 - Max 108.0

See last page for finish options

*For requests outside Min-Max range, please contact factory.

B - VOLTAGE *

120-277V | Universal Voltage

C - LAMP OPTIONS *

Apply multiplier from chart for delivered lumens at other CCT's and CRI's.

2700K | 2700K CCT

3000K | 3000K CCT

3500K | 3500K CCT

4000K | 4000K CCT

5000K | 5000K CCT

	80 CRI	90 CRI
2700K	n/a	0.67
3000K	0.93	0.74
3500K	0.93	0.74
4000K	1.00	0.74
5000K	1.00	n/a

D - CRI *

DF_80¹ | (default)

90²

¹ Not available in 2700K

² Not available in 5000K

E - MOUNTING

Yoke mount features $\pm 12^\circ$ of adjustable tilt.

DF_YOK | Yoke Mount with 4.6" J-Box Cover

F - EMERGENCY

10W, Constant Power Battery Back-up, with 90 minutes of emergency operation. EMR-Damp includes damp location enclosure for Battery back-up. EMR-W/L includes a wet location enclosure for battery back-up.

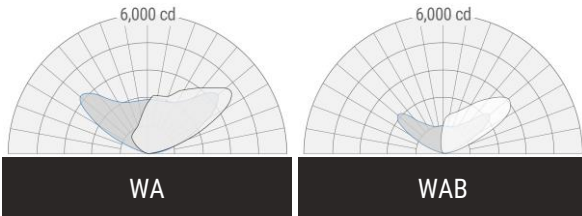
- EMR-DAMP | Emergency Battery Remote - Damp Location
- EMR-W/L | Emergency Battery Remote - Wet Location

G - OPTICAL DISTRIBUTION *

The backlight shield reduces the appearance of hot spots on walls. Contact factory for applications support.

- WA | Wide Asymmetric Type IV
- WAB³ | Wide Asymmetric with Backlight Shield

³ Delivered lumens are 70% of the output shown under Light Source; see IES file



H - OPTIONS

- NAT | Natatorium Construction
- F | Fusing

Standard Finishes

The colors shown are representative. Their actual appearance may vary due to differences in display settings. You can request color chips by emailing contact@spilighting.com. Please note, finishes may not be available in all configurations.

Paint Colors

PT01 RAL9003 Signal White (Gloss)	PT51 Matte White (Textured)	PT02 White (Textured)	PT04 RAL9001 Cream (Textured)	PT67 RAL7044 Silk Grey (Textured)
PT53 RAL7035 Light Grey (Textured)	PT54 RAL7037 Dusty Grey (Textured)	PT55 RAL7012 Basalt Grey (Textured)	PT56 RAL7016 Anthracite Grey (Textured)	PT11 Black (Textured)
PT57 RAL1015 Light Ivory (Textured)	PT58 RAL8004 Copper Brown (Textured)	PT59 RAL6021 Pale Green (Textured)	PT60 RAL1019 Grey Beige (Textured)	PT61 RAL7006 Beige Grey (Textured)
PT62 RAL1003 Signal Yellow (Textured)	PT63 RAL3001 Signal Red (Textured)	PT64 RAL6001 Emerald Green (Textured)	PT65 RAL5005 Signal Blue (Textured)	PT66 RAL5003 Sapphire Blue (Textured)

Metallic Paint Colors

PT22 Platinum (Metallic Gloss)	PT48 Brass (Metallic Textured)	PT28 Dark Stainless (Metallic Gloss)	PT49 Bronze (Metallic Textured)	PT32 Dark Bronze (Metallic Gloss)
PT46 Aluminum (Metallic Textured)				

Specialty Finishes



More RAL®, Pantone®, and custom finishes are available upon request. Setup fee and additional lead time applies. Call factory for details.