

Echo Blade Micro Max Exterior

EEW12448 9.13 in

JOB NAME:

TYPE:

NOTES:

DESCRIPTION

REMOTE FIXTURE The new Echo Blade Micro Max Exterior sconce is our smallest, most powerful, and most versatile asymmetric exterior lighting tool. Designed to be a discreet powerhouse, this fixture delivers up to 5,000 lumens, can be used in both direct and indirect applications, and has a mullion option for tight mounts.

FEATURES & BENEFITS

- Precision optics
- 4" x 9" x 1.5"
- ADA compliant
- Up to 5,000 delivered lumens
- Indirect and direct applications
- A true asymmetric with high-efficiency optics
- Efficacy up to 102 lm/W
- Top lens removes striations and corrects for color-over-angle
- Handcrafted in USA

SPECIFICATIONS

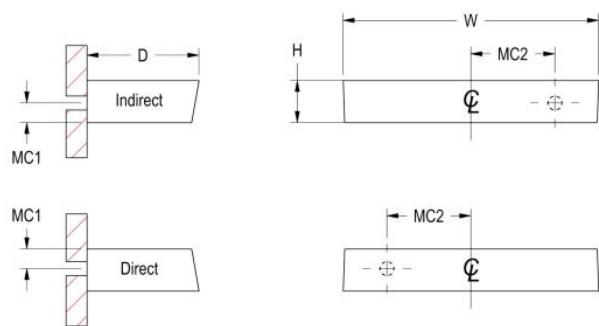
- **LIGHT SOURCE:** White LED light engine
- **CRI:** 80+ or 90+
- **ORIENTATION:** Indirect or direct
- **LUMEN MAINTENANCE:** L85 = >72,000 Hrs at 36°C ambient temperature
- **EFFICACY:** Up to 102 lm/W delivered
- **CCT:** 2700K, 3000K, 3500K, 4000K, 5000K
- **VOLTAGE:** 120-277V standard
- **DRIVER:** Includes remote Class 2 power supply and enclosure. Max distance to the driver is: #18 AWG = 50', #16 AWG = 75', #14 AWG = 100'. For extended distances, contact factory.
- **MAX AMBIENT OPERATING TEMP:** 36°C (97°F)
- **DIMMING:** 0-10V controls standard to 1%
- **CONTROLS:** Contact factory for control options (e.g., Lutron Athena, Current NX, nLight, Enlighted, Encelium, Wattstopper, WaveLinX, or Casambi).
- **EMERGENCY:** Remote battery option is provided with 10W Constant



Power Battery Back-up, providing 90 minutes of emergency operation.
Contact factory for other emergency options.

- **CONSTRUCTION:** Aluminum construction; precision injection molded optics
- **FINISH:** Choose from 26 standard thermoset polyester powder coat paint colors or various metal finishes. RAL®, Pantone®, or custom finishes available upon request.
- **MODIFICATIONS:** Consult factory for all modification requests.
- **APPROVALS:** ETL listed to UL standards (US & Canada) for use in wet locations.

DIMENSIONS



W	H	D	MC1	MC2
9.1 in	1.5 in	4 in	0.7 in	4.6 in
23.2 cm	3.8 cm	10.2 cm	1.8 cm	11.7 cm

Mounting Weight
Approximate: 5 lb (3 kg)

CONFIGURATOR

To configure your spec sheet online, go to www.spilighting.com/EEW12448. Not all options are available in all configurations; consult factory for details.

Required Field *

Catalog	Light Source*	Primary Finish*	Voltage*	Lamp Options*	CRI	Mounting*	Remote Power Supply Enclosure	Emergency	Optical Distribution*
EEW12448									
	A		B	C	D	E	F	G	H

A - LIGHT SOURCE *

- ☐ **L11W** | White 11W LED Light Engine | Delivered Lumens: 1,120
- ☐ **L22W** | White 22W LED Light Engine | Delivered Lumens: 2,240
- ☐ **L44W** | White 44W LED Light Engine | Delivered Lumens: 4,479

See last page for finish options

B - VOLTAGE *

- ☐ 120-277V | Universal Voltage

C - LAMP OPTIONS *

- ☐ 2700K | 2700K CCT
- ☐ 3000K | 3000K CCT
- ☐ 3500K | 3500K CCT
- ☐ 4000K | 4000K CCT
- ☐ 5000K | 5000K CCT

	80 CRI	90 CRI
2700K	n/a	0.67
3000K	0.93	0.74
3500K	0.93	0.74
4000K	1.00	0.74
5000K	1.00	n/a

D - CRI

- ☐ DF_80 ¹ | (default)
- ☐ 90 ²

¹ Not available in 2700K

² Not available in 5000K

E - MOUNTING *

- ☐ MUL | Mullion Mount
- ☐ SCN | Surface Mount

F - REMOTE POWER SUPPLY ENCLOSURE

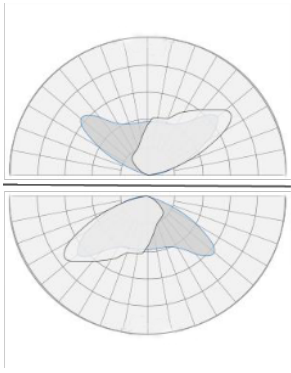
- ☐ PSE-NONE | Remote Power Supply without Enclosure
- ☐ PSE | Remote Power Supply with Damp Location Enclosure
- ☐ PSE-WL | Remote Power Supply with Wet Location Enclosure

G - EMERGENCY

- ☐ EMR | Emergency Battery Remote

H - OPTICAL DISTRIBUTION *

- ☐ WA | Wide Asymmetric Type IV



Standard Finishes

The colors shown are representative. Their actual appearance may vary due to differences in display settings. You can request color chips by emailing contact@spilighting.com. Please note, finishes may not be available in all configurations.

Paint Colors

PT01 RAL9003 Signal White (Gloss)	PT51 Matte White (Textured)	PT02 White (Textured)	PT04 RAL9001 Cream (Textured)	PT67 RAL7044 Silk Grey (Textured)
PT53 RAL7035 Light Grey (Textured)	PT54 RAL7037 Dusty Grey (Textured)	PT55 RAL7012 Basalt Grey (Textured)	PT56 RAL7016 Anthracite Grey (Textured)	PT11 Black (Textured)
PT57 RAL1015 Light Ivory (Textured)	PT58 RAL8004 Copper Brown (Textured)	PT59 RAL6021 Pale Green (Textured)	PT60 RAL1019 Grey Beige (Textured)	PT61 RAL7006 Beige Grey (Textured)
PT62 RAL1003 Signal Yellow (Textured)	PT63 RAL3001 Signal Red (Textured)	PT64 RAL6001 Emerald Green (Textured)	PT65 RAL5005 Signal Blue (Textured)	PT66 RAL5003 Sapphire Blue (Textured)

Metallic Paint Colors

PT22 Platinum (Metallic Gloss)	PT48 Brass (Metallic Textured)	PT28 Dark Stainless (Metallic Gloss)	PT49 Bronze (Metallic Textured)	PT32 Dark Bronze (Metallic Gloss)
PT46 Aluminum (Metallic Textured)				

Specialty Finishes



More RAL®, Pantone®, and custom finishes are available upon request. Setup fee and additional lead time applies.Call factory for details.