

Echo Round 3.5 LED - Wall

SPILIGHTING

PROJECT DETAILS

EIW11903 25.90 in

JOB NAME:

TYPE:

NOTES:

DESCRIPTION

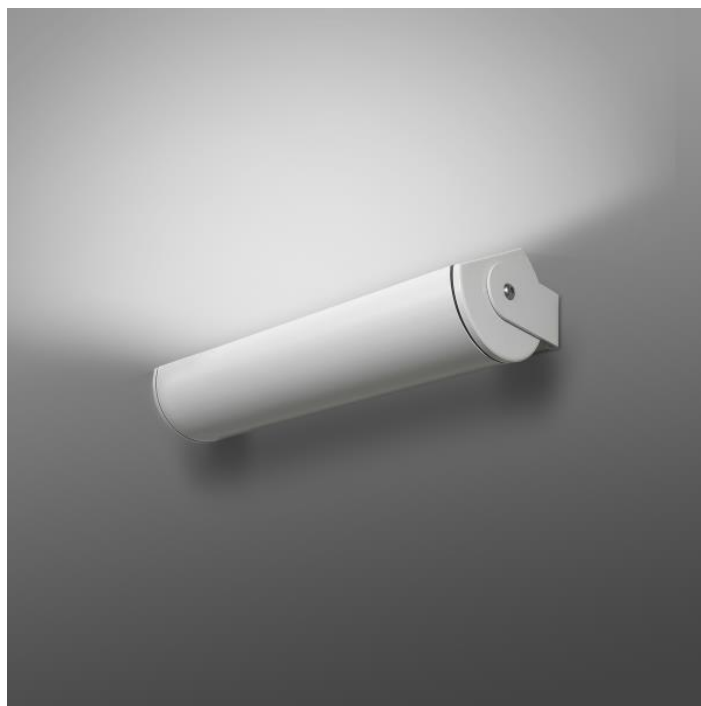
Echo Round 3.5 LED features a compact housing, integral power supply, and efficient optical design. This unobtrusive lighting solution is perfect for small spaces with lower ceilings such as small offices, conference rooms, corridors, lobbies, and coves. Customize your visual environment with a wide variety of mounting and shielding options sure to solve your lighting application challenges. For a complimentary lighting layout, contact our applications team at SPItteam@spilighting.com.

FEATURES & BENEFITS

- Bracket mount is compliant with Americans with Disabilities Act (ADA) requirements
- Stainless steel external fasteners will not rust or corrode
- Field adjustable housing locks into position, enabling precise fixture alignment for high-quality design performance
- Dust cover lens standard
- Handcrafted in USA, BABA Compliant

SPECIFICATIONS

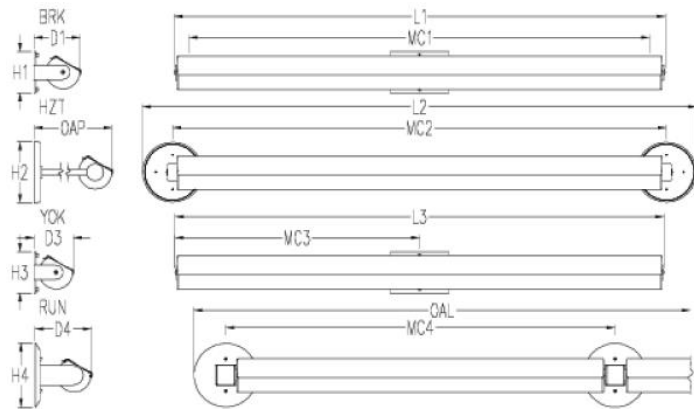
- **LIGHT SOURCE:** White LED light engine
- **CRI:** 90+HE
- **LUMEN MAINTENANCE:** L70 = >50,000 Hrs.
- **CCT:** 2700K, 3000K, 3500K, 4000K, 5000K
- **VOLTAGE:** 120-277V standard
- **DRIVER:** Integral Class 2 power supply standard
- **DIMMING:** 1% minimum dim level standard
- **CONTROLS:** 0-10V standard. Lutron Athena and nLight AIR optional. Contact factory for other controls (e.g., Current NX, Enlighted, Encelium, Wattstopper, WaveLinx, or Casambi).
- **EMERGENCY:** Remote battery option is provided with 10W Constant Power Battery back-up, providing 90 Minutes of Emergency operation. Contact factory for other Emergency options.
- **CONSTRUCTION:** Extruded aluminum construction provides durable protection for internal components and is recyclable; cast aluminum end caps protect internal components and are



recyclable

- **FINISH:** Housing and mounting components finished to match.
To specify separately, contact factory. Choose from 26 standard thermoset polyester powder coat paint colors. RAL®, Pantone®, or custom finishes available upon request.
- **MODIFICATIONS:** Consult factory for all modification requests, including RGB and static color options
- **APPROVALS:** ETL listed to UL standards (US and Canada) for use in damp locations; not recommended for exterior applications

DIMENSIONS



L1	L2	H1	H2	H3	D1	D3
25.9 in 65.8 cm	32.6 in 82.8 cm	4.2 in 10.7 cm	6.2 in 15.7 cm	4.2 in 10.7 cm	4 in 10.2 cm	4.8 in 12.2 cm
OAP	MC1	MC2	MC3	D4	H4	L3
26.5 in 67.3 cm	23 in 58.4 cm	26.4 in 67.1 cm	27.5 in 69.8 cm	5.8 in 14.7 cm	6.5 in 16.5 cm	26.1 in 66.3 cm

MC4
27.8 in
70.6 cm

Mounting Weight
Approximate: 10 lb (5 kg)

CONFIGURATOR

To configure your spec sheet online, go to www.spilighting.com/EIW11903. Not all options are available in all configurations; consult factory for details.

Required Field *

Catalog	Light Source*	Primary Finish*	Voltage*	Lamp Options*	CRI*	Controls*	Mounting*	Emergency	Accessories	Options*	Other Than Standard Options
EIW11903											
	A		B	C	D	E	F	G	H	I	J

A - LIGHT SOURCE *

To ensure color consistency, SPI uses precise bin selection and strict quality processes to maintain a 3-step (MacAdam) SDCM on all white LED lampings. Published LED luminaire wattages are calculated using a typical power supply efficiency of 88%; exact wattages may vary based on application.

- ☐ **L8W** | White 8W LED Light Engine | Delivered Lumens: 659
- ☐ **L29W** | White 29W LED Light Engine | Delivered Lumens: 2,484
- ☐ **L14W** | White 14W LED Light Engine | Delivered Lumens: 1,242
- ☐ **Cust_Out** |

Lumen Calculator: Enter Lumens or Watts if different than displayed

LU Min 684 - Max 2480

W Min 8.0 - Max 29.0

See last page for finish options

*For requests outside Min-Max range, please contact factory.

B - VOLTAGE *

☐ 120-277V | Universal Voltage

C - LAMP OPTIONS *

Apply multiplier from chart for delivered lumens at other CCT's and CRI's.

☐ 2700K | 2700K CCT

☐ 3000K | 3000K CCT

☐ 3500K | 3500K CCT

☐ 4000K | 4000K CCT

☐ 5000K | 5000K CCT

D - CRI *

☐ DF_90+HE | 90+ High Efficacy

E - CONTROLS *

Extended lead times may apply for controls other than 0-10V. Contact factory for additional control options such as Current NX, Enlighted, Encelium, Wattstopper, WaveLinx, Casambi, or others.

☐ DF_DIM1 | 0-10V Control, 1% Dimming (default)

☐ AWRN | Lutron Athena Wireless Node, 1% Dimming

☐ NLTA | Acuity nLight Air, 1% Dimming

☐ LDE1 | Lutron Hi-lume EcoSystem Control, 1% Dimming (Soft-On, Fade-to-Black)

F - MOUNTING *

Bracket mount is the recommended mounting for installing Echo fixtures longer than three feet. The BRK mounting is for individual fixtures and features a bracket at each end for surface mounting and includes a separate cover that fits over a standard 4" octagonal junction box. Additional support required (by others). Yoke mount features a yoke bracket that runs the full length of the fixture, the 4" octagonal junction box cover is centered on the yoke with auxiliary mounting holes. Horizontal and Run mount options use either a stem or hub canopy at each end to mount over a standard 4" octagonal junction box, auxiliary mounting holes are provided. **INSTALLATION NOTES:** During installation the contractor is responsible to use actual fixtures to ensure accurate mounting centers from one fixture to the next along the length of the linear run. Choose a mounting from below:

☐ BRK | Bracket Mount

☐ HZT | Horizontal Mount

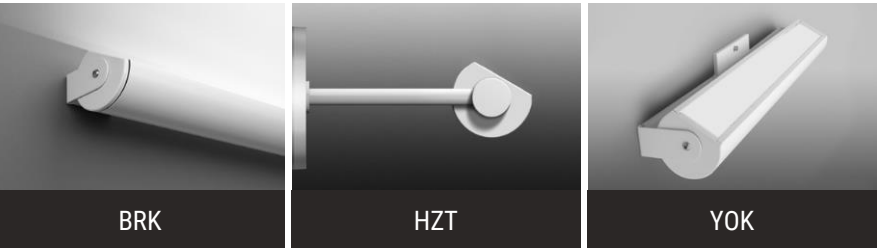
☐ YOK | Yoke Mount

☐ RUN ¹ | Continuous Run

☐ OAL | Specify Length of Run

Length:

¹ For a take-off and pricing, contact factory



G - EMERGENCY

10W, Constant Power Battery Back-up, with 90 minutes of emergency operation. EMR includes damp location enclosure for Battery back-up. When specifying EMR with RUN, the first fixture in the run will be the emergency unit. If other or different Emergency units are needed, contact factory. Additional Power feed location will be required to power non-emergency sections.

☐ EMR | Emergency Battery Remote

H - ACCESSORIES

Cut-off shield (CS), louver (LV) and translucent shield (TS) options cannot be used together.

☐ CS | Cut-Off Shield

☐ LV2 | Black Unidirectional Louver External

☐ TS | Translucent Shield



I - OPTIONS *

☐ NAT | Natatorium Construction

J - OTHER THAN STANDARD OPTIONS

When selecting HZT mount, you may specify a projection other than standard. Specify overall projection required from wall to the end of the fixture. Overall projection greater than standard includes aircraft cable support kit.

OAP | Projection length other than standard

Standard Finishes

The colors shown are representative. Their actual appearance may vary due to differences in display settings. You can request color chips by emailing contact@spilighting.com. Please note, finishes may not be available in all configurations.

Paint Colors

PT01 RAL9003 Signal White (Gloss)	PT51 Matte White (Textured)	PT02 White (Textured)	PT04 RAL9001 Cream (Textured)	PT67 RAL7044 Silk Grey (Textured)
PT53 RAL7035 Light Grey (Textured)	PT54 RAL7037 Dusty Grey (Textured)	PT55 RAL7012 Basalt Grey (Textured)	PT56 RAL7016 Anthracite Grey (Textured)	PT11 Black (Textured)
PT57 RAL1015 Light Ivory (Textured)	PT58 RAL8004 Copper Brown (Textured)	PT59 RAL6021 Pale Green (Textured)	PT60 RAL1019 Grey Beige (Textured)	PT61 RAL7006 Beige Grey (Textured)
PT62 RAL1003 Signal Yellow (Textured)	PT63 RAL3001 Signal Red (Textured)	PT64 RAL6001 Emerald Green (Textured)	PT65 RAL5005 Signal Blue (Textured)	PT66 RAL5003 Sapphire Blue (Textured)

Metallic Paint Colors

PT22 Platinum (Metallic Gloss)	PT48 Brass (Metallic Textured)	PT28 Dark Stainless (Metallic Gloss)	PT49 Bronze (Metallic Textured)	PT32 Dark Bronze (Metallic Gloss)
PT46 Aluminum (Metallic Textured)				

Specialty Finishes



More RAL®, Pantone®, and custom finishes are available upon request. Setup fee and additional lead time applies.Call factory for details.