

Echo Blade

EIW12179 15.50 in

SPILIGHTING

PROJECT DETAILS

JOB NAME:

TYPE:

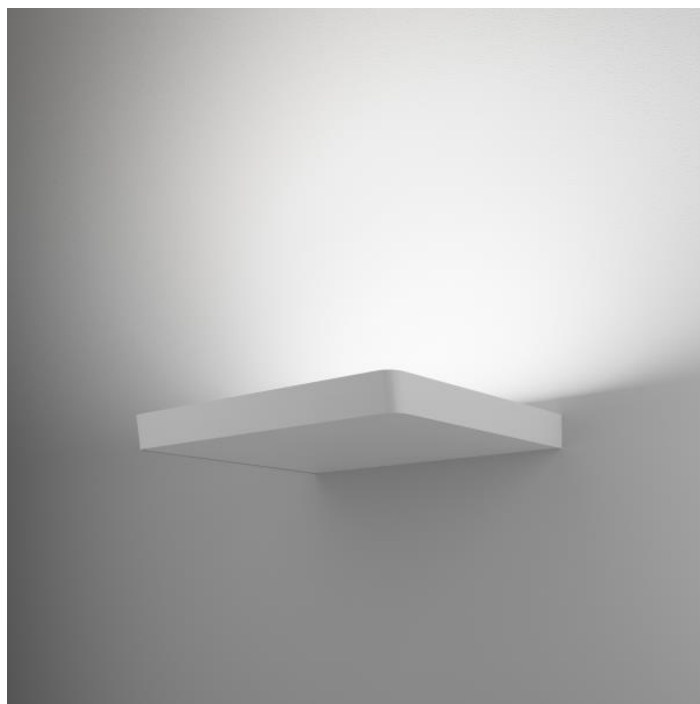
NOTES:

DESCRIPTION

Echo Blade is the slimmest, most discreet high output asymmetric lighting tool on the market. It combines high output density with outstanding quality in a sleek, new architectural form that performs as great as it looks. With a profile of just 1.5", SPI Lighting's Echo Blade can deliver from 12,000 to 36,000 lumens. Available in either a deep forward throw or a wide distribution, it is ideal for illuminating large spaces with comfortable, glare-free light. For a complimentary lighting layout, contact our applications team at SPIteam@spilighting.com.

FEATURES & BENEFITS

- Increase visual comfort, eliminate source brightness, and improve light uniformity with indirect lighting
- A true asymmetric with high-efficiency optics
- Efficacy up to 112 lm/W
- Optional backlight shielding available
- Full horizontal cut-off
- Minimal projection off the wall
- Delivers a smooth, consistent beam pattern of even white light suitable for highly-finished ceilings and walls
- Top lens removes striations and corrects for color-over-angle
- Natatorium-rated version available
- Handcrafted in USA, BABA Compliant

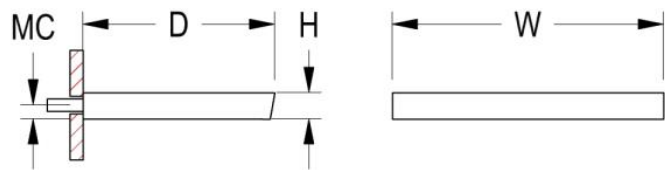


SPECIFICATIONS

- **LIGHT SOURCE:** White LED light engine
- **CRI:** 80+ or 90+
- **ORIENTATION:** Indirect or direct
- **LUMEN MAINTENANCE:** L90 = >72,000 Hrs at 38°C ambient temperature
- **EFFICACY:** Up to 112 lm/W delivered
- **CCT:** 2700K, 3000K, 3500K, 4000K, 5000K
- **VOLTAGE:** 120-277V standard
- **DRIVER:** Includes remote Class 2 power supplies and enclosure.
Max distance to the driver is: #18 AWG = 50', #16 AWG = 75', #14 AWG = 100'. For extended distances, contact factory.
- **MAX AMBIENT OPERATING TEMP:** 38°C (101°F)

- **DIMMING:** 1% minimum dim level standard
- **CONTROLS:** 0-10V standard. Lutron Athena, Current NX, and nLight AIR optional. Contact factory for other controls (e.g., Enlighted, Encelium, Wattstopper, WaveLinx, or Casambi)
- **EMERGENCY:** Remote battery option is provided with 10W Constant Power Battery back-up, providing 90 Minutes of Emergency operation. Contact factory for other Emergency options.
- **INTEGRATED SURGE PROTECTION:** LED components are protected against minor surge events
- **CONSTRUCTION:** Aluminum construction; precision injection molded optics
- **FINISH:** Choose from 26 standard thermoset polyester powder coat paint colors. RAL®, Pantone®, or custom finishes available upon request.
- **MODIFICATIONS:** Consult factory for all modification requests
- **APPROVALS:** ETL listed to UL standards (US & Canada) for use in damp locations; not recommended for exterior applications

DIMENSIONS



W	H	D	MC
15.5 in 39.4 cm	1.5 in 3.8 cm	11 in 27.9 cm	0.8 in 2 cm
Mounting Weight Approximate: 10 lb (5 kg)			

CONFIGURATOR

To configure your spec sheet online, go to www.spilighting.com/EIW12179. Not all options are available in all configurations; consult factory for details.

Required Field *

Catalog	Light Source*	Primary Finish*	Voltage*	Lamp Options*	CRI*	Controls*	Mounting	Emergency	Optical Distribution*	Options
EIW12179										
	A		B	C	D	E	F	G	H	I

A - LIGHT SOURCE *

To ensure color consistency, SPI uses precise bin selection and strict quality processes to maintain a 3-step (MacAdam) SDCM on all white LED lampings. Published LED luminaire wattages are calculated using a typical power supply efficiency of 88%; exact wattages may vary based on

application. Delivered lumens shown are with the Deep Asymmetric (DA) optical package; apply multiplier for alternate distributions.

☐ **L108W** | White 108W LED Light Engine | Delivered Lumens: 12,107

☐ **Cust_Out** |

Lumen Calculator: Enter Lumens or Watts if different than displayed

LU Min 6053 - Max 12107

W Min 54.0 - Max 108.0

See last page for finish options

*For requests outside Min-Max range, please contact factory.

B - VOLTAGE *

☐ 120-277V | Universal Voltage

C - LAMP OPTIONS *

Apply multiplier from chart for delivered lumens at other CCT's and CRI's.

☐ 2700K | 2700K CCT

☐ 3000K | 3000K CCT

☐ 3500K | 3500K CCT

☐ 4000K | 4000K CCT

☐ 5000K | 5000K CCT

	80 CRI	90 CRI
2700K	n/a	0.67
3000K	0.93	0.74
3500K	0.93	0.74
4000K	1.00	0.74
5000K	1.00	n/a

D - CRI *

☐ DF_80 ¹ | (default)

☐ 90 ²

¹ Not available in 2700K

² Not available in 5000K

E - CONTROLS *

Extended lead times may apply for controls other than 0-10V. Contact factory for additional control options such as Enlighted, Encelium, Wattstopper, WaveLinx, Casambi, or others.

- ☐ DF_DIM1 | 0-10V Control, 1% Dimming (default)
- ☐ AWRN ³ | Lutron Athena Wireless Node, 1% Dimming
- ☐ NX ³ | Current NX Wireless, 1% Dimming
- ☐ NLTA ³ | Acuity nLight Air, 1% Dimming

³ Not recommended for natatorium environments without additional component protection. Contact factory for options.

F - MOUNTING

- ☐ DF_SCN | Surface Mount over 1/2" EMT Conduit (default)

G - EMERGENCY

10W, Constant Power Battery Back-up, with 90 minutes of emergency operation. EMR includes damp location enclosure for Battery back-up.

- ☐ EMR | Emergency Battery Remote

H - OPTICAL DISTRIBUTION *

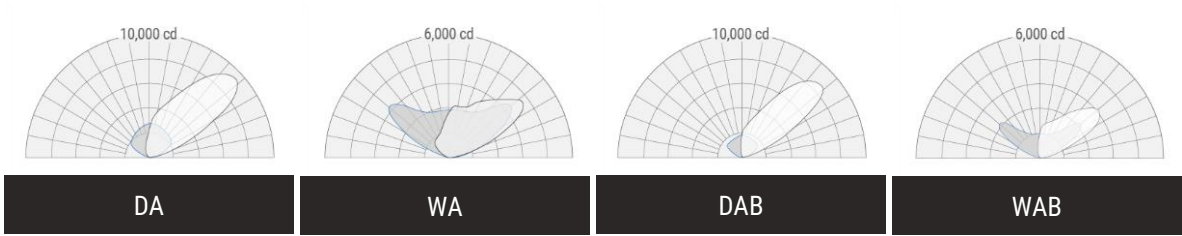
The Deep Asymmetric beam is commonly used in larger spaces to get more light to the center of the room. The Wide Asymmetric beam provides more even illumination in smaller spaces and allows for greater fixture spacing. The backlight shield reduces the appearance of hot spots on walls. Contact factory for applications support.

- ☐ DA | Deep Asymmetric
- ☐ WA ⁴ | Wide Asymmetric
- ☐ DAB ⁵ | Deep Asymmetric with Backlight Shield
- ☐ WAB ⁶ | Wide Asymmetric with Backlight Shield

⁴ Delivered lumens are 91% of the output shown under Light Source; see IES file

⁵ Delivered lumens are 78% of the output shown under Light Source; see IES file

⁶ Delivered lumens are 63% of the output shown under Light Source; see IES file



I - OPTIONS

Natatorium construction adds stainless steel fasteners and silicone potted connections to the luminaire's already robust construction, which includes a durable aluminum housing, minimum 2 mils powder coat paint finish, and fully-potted power supply(s) sealed with epoxy.

☐ NAT | Natatorium Construction

☐ F | Fusing

Standard Finishes

The colors shown are representative. Their actual appearance may vary due to differences in display settings. You can request color chips by emailing contact@spilighting.com. Please note, finishes may not be available in all configurations.

Paint Colors

PT01 RAL9003 Signal White (Gloss)	PT51 Matte White (Textured)	PT02 White (Textured)	PT04 RAL9001 Cream (Textured)	PT67 RAL7044 Silk Grey (Textured)
PT53 RAL7035 Light Grey (Textured)	PT54 RAL7037 Dusty Grey (Textured)	PT55 RAL7012 Basalt Grey (Textured)	PT56 RAL7016 Anthracite Grey (Textured)	PT11 Black (Textured)
PT57 RAL1015 Light Ivory (Textured)	PT58 RAL8004 Copper Brown (Textured)	PT59 RAL6021 Pale Green (Textured)	PT60 RAL1019 Grey Beige (Textured)	PT61 RAL7006 Beige Grey (Textured)
PT62 RAL1003 Signal Yellow (Textured)	PT63 RAL3001 Signal Red (Textured)	PT64 RAL6001 Emerald Green (Textured)	PT65 RAL5005 Signal Blue (Textured)	PT66 RAL5003 Sapphire Blue (Textured)

Metallic Paint Colors

PT22 Platinum (Metallic Gloss)	PT48 Brass (Metallic Textured)	PT28 Dark Stainless (Metallic Gloss)	PT49 Bronze (Metallic Textured)	PT32 Dark Bronze (Metallic Gloss)
PT46 Aluminum (Metallic Textured)				

Specialty Finishes



More RAL®, Pantone®, and custom finishes are available upon request. Setup fee and additional lead time applies.Call factory for details.