

# Echo Blade Micro Max

EIW12399 9.13 in

JOB NAME:

TYPE:

NOTES:

## DESCRIPTION

Our Smallest, most powerful, and most versatile asymmetric lighting tool. Designed to be a discreet powerhouse, this fixture delivers up to 5,000 lumens, has 6 optical distributions, and can be utilized in both indirect and direct applications.

### FEATURES & BENEFITS

- 4" x 9" x 1.5"
- ADA compliant
- Up to 5,000 delivered lumens
- 6 optical distributions
- Indirect and direct applications
- A true asymmetric with high-efficiency optics
- Efficacy up to 112 lm/W
- Optional backlight shield available
- Full horizontal cutoff
- Top lens removes striations and corrects for color-over-angle
- Handcrafted in USA, BABA Compliant

### SPECIFICATIONS

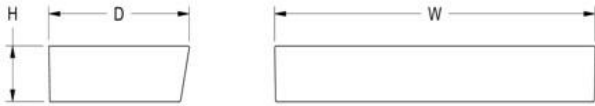
- **LIGHT SOURCE:** White LED light engine
- **CRI:** 80+ or 90+
- **ORIENTATION:** Indirect or direct
- **LUMEN MAINTENANCE:** L85 = >72,000 Hrs at 36°C ambient temperature
- **EFFICACY:** Up to 112 lm/W delivered
- **CCT:** 2700K, 3000K, 3500K, 4000K, 5000K
- **VOLTAGE:** 120-277V standard
- **DRIVER:** Includes remote Class 2 power supply and enclosure.  
Max distance to the driver is: #18 AWG = 50', #16 AWG = 75', #14 AWG = 100'. For extended distances, contact factory.
- **MAX AMBIENT OPERATING TEMP:** 36°C (97°F)
- **DIMMING:** 1% minimum dim level standard
- **CONTROLS:** 0-10V standard. Lutron Athena, Current NX, and nLight AIR optional. Contact factory for other controls (e.g.,



Enlighted, Encelium, Wattstopper, WaveLinx, or Casambi)

- **EMERGENCY:** Remote battery option is provided with 10W Constant Power Battery Back-up, providing 90 minutes of emergency operation. Contact factory for other emergency options.
- **CONSTRUCTION:** Aluminum construction; precision injection molded optics
- **FINISH:** Choose from 26 standard thermoset polyester powder coat paint colors or various metal finishes. RAL®, Pantone®, or custom finishes available upon request.
- **MODIFICATIONS:** Consult factory for all modification requests
- **APPROVALS:** ETL listed to UL standards (US & Canada) for use in damp locations; not recommended for exterior applications

## DIMENSIONS



<b>W</b>	<b>H</b>	<b>D</b>
9.1 in	1.5 in	4 in
23.2 cm	3.8 cm	10.2 cm

**Mounting Weight**  
Approximate: 5 lb (3 kg)

## CONFIGURATOR

To configure your spec sheet online, go to [www.spilighting.com/EIW12399](http://www.spilighting.com/EIW12399). Not all options are available in all configurations; consult factory for details.

### Required Field \*

Catalog	Light Source*	Primary Finish*	Voltage*	Lamp Options*	CRI*	Controls*	Mounting*	Emergency	Optical Distribution
EIW12399									
	A		B	C	D	E	F	G	H

## A - LIGHT SOURCE \*

To ensure color consistency, SPI uses precise bin selection and strict quality processes to maintain a 3-step (MacAdam) SDCM on all white LED lampings. Published LED luminaire wattages are calculated using a typical power supply efficiency of 88%; exact wattages may vary based on application. Delivered lumens shown are with the Deep Asymmetric (DA) optical package; apply multiplier for alternate distributions.

- L12W** | White 12W LED Light Engine | Delivered Lumens: 1,345
- L22W** | White 22W LED Light Engine | Delivered Lumens: 2,466
- L44W** | White 44W LED Light Engine | Delivered Lumens: 4,932

See last page for finish options

## B - VOLTAGE \*

---

**120-277V** | Universal Voltage

## C - LAMP OPTIONS \*

---

Apply multiplier from chart for delivered lumens at other CCT's and CRI's.

- 2700K** | 2700K CCT
- 3000K** | 3000K CCT
- 3500K** | 3500K CCT
- 4000K** | 4000K CCT
- 5000K** | 5000K CCT

	80 CRI	90 CRI
2700K	n/a	0.67
3000K	0.93	0.74
3500K	0.93	0.74
4000K	1.00	0.74
5000K	1.00	n/a

## D - CRI \*

---

- DF\_80**<sup>1</sup> | (default)
- 90**<sup>2</sup>

<sup>1</sup> Not Available in 2700K

<sup>2</sup> Not Available in 5000K

## E - CONTROLS \*

---

Extended lead times may apply for controls other than 0-10V. Contact factory for additional control options such as Enlighted, Encelium, Wattstopper, WaveLinx, Casambi, or others.

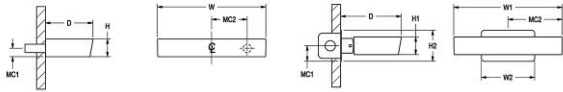
- DF\_DIM1** | 0-10V Control, 1% Dimming (default)
- AWNR** | Lutron Athena Wireless Node, 1% Dimming
- NX** | Current NX Wireless, 1% Dimming
- NLTA** | Acuity nLight Air, 1% Dimming

## F - MOUNTING \*

Yoke Mount features  $\pm 10^\circ$  of adjustable tilt.

- SCN** | Surface Mount over 1/2" EMT Conduit (default)
- YOK** <sup>3</sup> | Yoke Mount with Standard Switch Box Cover

<sup>3</sup> Not ADA compliant with yok mount



<b>D</b>	<b>H</b>	<b>MC1</b>	<b>MC2</b>	<b>D</b>	<b>H1</b>	<b>H2</b>	<b>MC1</b>
4.0 in 10.2 cm	1.5 in 3.8 cm	0.7 in 1.8 cm	3.0 in 3.8 cm	5.1 in 12.9 cm	1.5 in 3.8 cm	2.6 in 6.6 cm	1.3 in 3.3 cm
<b>W</b>				<b>MC2</b>	<b>W1</b>	<b>W2</b>	
9.1 in 23.2 cm				4.6 in 11.7 cm	9.1 in 23.2 cm	4.5 11.4 cm	

SCN

YOK

## G - EMERGENCY

10W, Constant Power Battery Back-up, with 90 minutes of emergency operation. EMR includes damp location enclosure for battery back-up.

- EMR** | Emergency Battery Remote

## H - OPTICAL DISTRIBUTION

Deep Asymmetric: Larger spaces, gets more light to center of room.

Wide Asymmetric: Ceiling uniformity, wall wash, closer to ceiling applications.

Ultra-Wide Asymmetric: Narrow spaces, maximize fixture spacing.

- DA** | Deep Asymmetric
- DAB** <sup>4</sup> | Deep Asymmetric with Backlight Shield
- WA** <sup>5</sup> | Wide Asymmetric
- WAB** <sup>6</sup> | Wide Asymmetric with Backlight Shield
- UWA** <sup>7</sup> | Ultra Wide Asymmetric
- UWAB** <sup>8</sup> | Ultra Wide Asymmetric With Backlight Shield

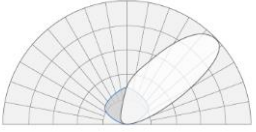
<sup>4</sup> Delivered lumens are 76% of the output shown under Light Source; see IES file

<sup>5</sup> Delivered lumens are 91% of the output shown under Light Source; see IES file

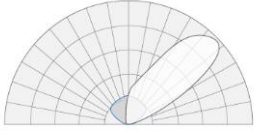
<sup>6</sup> Delivered lumens are 65% of the output shown under Light Source; see IES file

<sup>7</sup> Delivered lumens are 95% of the output shown under Light Source; see IES file

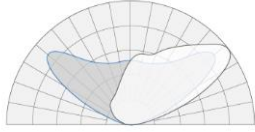
<sup>8</sup> Delivered lumens are 73% of the output shown under Light Source; see IES file



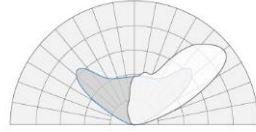
DA



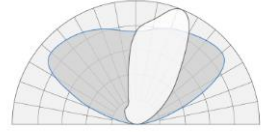
DAB



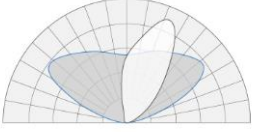
WA



WAB



UWA



UWAB

## Standard Finishes

The colors shown are representative. Their actual appearance may vary due to differences in display settings. You can request color chips by emailing [contact@spilighting.com](mailto:contact@spilighting.com). Please note, finishes may not be available in all configurations.

### Paint Colors

<b>PT01</b> RAL9003 Signal White (Gloss)	<b>PT51</b> Matte White (Textured)	<b>PT02</b> White (Textured)	<b>PT04</b> RAL9001 Cream (Textured)	<b>PT67</b> RAL7044 Silk Grey (Textured)
<b>PT53</b> RAL7035 Light Grey (Textured)	<b>PT54</b> RAL7037 Dusty Grey (Textured)	<b>PT55</b> RAL7012 Basalt Grey (Textured)	<b>PT56</b> RAL7016 Anthracite Grey (Textured)	<b>PT11</b> Black (Textured)
<b>PT57</b> RAL1015 Light Ivory (Textured)	<b>PT58</b> RAL8004 Copper Brown (Textured)	<b>PT59</b> RAL6021 Pale Green (Textured)	<b>PT60</b> RAL1019 Grey Beige (Textured)	<b>PT61</b> RAL7006 Beige Grey (Textured)
<b>PT62</b> RAL1003 Signal Yellow (Textured)	<b>PT63</b> RAL3001 Signal Red (Textured)	<b>PT64</b> RAL6001 Emerald Green (Textured)	<b>PT65</b> RAL5005 Signal Blue (Textured)	<b>PT66</b> RAL5003 Sapphire Blue (Textured)

### Metallic Paint Colors

<b>PT22</b> Platinum (Metallic Gloss)	<b>PT48</b> Brass (Metallic Textured)	<b>PT28</b> Dark Stainless (Metallic Gloss)	<b>PT49</b> Bronze (Metallic Textured)	<b>PT32</b> Dark Bronze (Metallic Gloss)
<b>PT46</b> Aluminum (Metallic Textured)				

### Brushed Aluminum

<b>BAL</b> Brushed Aluminum	<b>MAL</b> Microbrushed Aluminum
--------------------------------	-------------------------------------

## Specialty Finishes



More RAL®, Pantone®, and custom finishes are available upon request. Setup fee and additional lead time applies. Call factory for details.