

STYK Exterior - Cove

SEV12148 2.90 in

JOB NAME:

TYPE:

NOTES:

DESCRIPTION

Styk was built to provide the most lumens with the smallest luminaire package, while optimizing life. Not limited to decorative lighting, effective functional lighting is provided through the optimal light control in this minimal package. It's three optical offerings enable tremendous flexibility including wall washing, wall grazing, and asymmetric lighting solutions. It produces high-quality illumination to accent and illuminate your architectural elements. Available in 1' to 8' lengths.

FEATURES & BENEFITS

- Sleek 1.5" diameter housing
- A forward throw optic, for even wall wash illumination, is standard
- Symmetrical optic options are available for more volumetric illumination
- Lamp body can be rotated and locks into position for precise fixture alignment
- Up to 1,450 lumens per foot delivered (with Forward Throw distribution)
- Anodized finish provides durable corrosion protection
- Handcrafted in USA, BABA Compliant

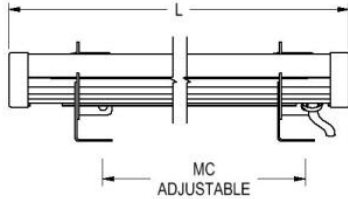
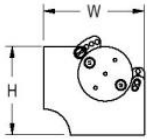


SPECIFICATIONS

- **LIGHT SOURCE:** IP66 white LED light engine
- **CRI:** 90+HE
- **LUMEN MAINTENANCE:** L70 = >50,000 Hrs.
- **EFFICACY:** 102 lm/W delivered (with Forward Throw distribution)
- **CCT:** 2700K, 3000K, 3500K, 4000K, 5000K
- **VOLTAGE:** 120-277V standard
- **DRIVER:** Includes one remote damp listed Class 2 power supply and either a damp location or wet location enclosure, except 8FT-L113W which has two. 36" lead length standard; black power cord standard unless otherwise specified. Max distance to the driver is: #18 AWG = 50', #16 AWG = 75', #14 AWG = 100'. For extended distances, contact factory.

- **DIMMING:** 0-10V controls standard to 1%
- **CONTROLS:** Contact factory for control options (e.g., Lutron Athena, Current NX, nLight, Enlighted, Encelium, Wattstopper, WaveLinx, or Casambi).
- **EMERGENCY:** Remote battery option is provided with 10W Constant Power Battery back-up, providing 90 Minutes of Emergency operation. Contact factory for other Emergency options.
- **INTEGRATED SURGE PROTECTION:** LED components are protected against minor surge events
- **CONSTRUCTION:** Extruded aluminum construction provides durable protection for internal components and is recyclable
- **FINISH:** Housing available in anodized finishes only. End caps and mounting components painted to match.
- **MODIFICATIONS:** Consult factory for all modification requests, including RGB and static LED colors
- **APPROVALS:** ETL listed to UL standards (US and Canada) for use in wet locations. IP66 rated fixture per International Electrotechnical Commission (IEC) certifies fixture as dust-tight and protected against powerful water jets. Run configuration is wet location listed only.

DIMENSIONS



1FT	W	L	H
	2.9 in 7.4 cm	14.5 in 36.8 cm	2.8 in 7.1 cm

Mounting Weight: Approximate: 5 lb (3 kg)

2FT	W	L	H
	2.9 in 7.4 cm	26 in 66 cm	2.8 in 7.1 cm

Mounting Weight: Approximate: 5 lb (3 kg)

3FT	W	L	H
	2.9 in 7.4 cm	38 in 96.5 cm	2.8 in 7.1 cm

Mounting Weight: Approximate: 5 lb (3 kg)

4FT	W	L	H
	2.9 in 7.4 cm	50 in 127 cm	2.8 in 7.1 cm

Mounting Weight: Approximate: 5 lb (3 kg)

5FT	W	L	H
	2.9 in 7.4 cm	62 in 157.5 cm	2.8 in 7.1 cm

Mounting Weight: Approximate: 10 lb (5 kg)

6FT	W	L	H
	2.9 in 7.4 cm	75.8 in 192.5 cm	2.8 in 7.1 cm

Mounting Weight: Approximate: 10 lb (5 kg)

8FT	W	L	H
	2.9 in 7.4 cm	99.8 in 253.5 cm	2.8 in 7.1 cm

Mounting Weight: Approximate: 10 lb (5 kg)

CONFIGURATOR

To configure your spec sheet online, go to www.spilighting.com/SEV12148. Not all options are available in all configurations; consult factory for details.

Required Field *

Catalog	Light Source*	Primary Finish*	Voltage*	Lamp Options*	CRI*	Mounting*	Remote Power Supply Enclosure*	Emergency	Optical Distribution*	Options
SEV12148										
	A		B	C	D	E	F	G	H	I

A - LIGHT SOURCE *

To ensure color consistency, SPI uses precise bin selection and strict quality processes to maintain a 3-step (MacAdam) SDCM on all white LED lampings. Published LED luminaire wattages are calculated using a typical power supply efficiency of 88%; exact wattages may vary based on application. Alternative wattages available upon request. Delivered lumens shown below are for Forward Throw distribution.

1 FOOT NOMINAL FIXTURE

- 1FT-L4W** | White 4W LED Light Engine | Delivered Lumens: 407
- 1FT-L7W** | White 7W LED Light Engine | Delivered Lumens: 712
- 1FT-L14W** | White 14W LED Light Engine | Delivered Lumens: 1,424
- Cust_Out_1FT** |

Lumen Calculator: Enter Lumens or Watts if different than displayed

LU Min 407 - Max 1424

W Min 4.0 - Max 14.0

2 FOOT NOMINAL FIXTURE

- 2FT-L8W** | White 8W LED Light Engine | Delivered Lumens: 814
- 2FT-L14W** | White 14W LED Light Engine | Delivered Lumens: 1,424
- 2FT-L28W** | White 28W LED Light Engine | Delivered Lumens: 2,848
- Cust_Out_2FT** |

Lumen Calculator: Enter Lumens or Watts if different than displayed

LU Min 814 - Max 2850

W Min 8.0 - Max 28.0

3 FOOT NOMINAL FIXTURE

- 3FT-L12W** | White 12W LED Light Engine | Delivered Lumens: 1,220
- 3FT-L21W** | White 21W LED Light Engine | Delivered Lumens: 2,136
- 3FT-L42W** | White 42W LED Light Engine | Delivered Lumens: 4,271
- Cust_Out_3FT** |

Lumen Calculator: Enter Lumens or Watts if different than displayed

LU Min 1220 - Max 4271

W Min 12.0 - Max 42.0

4 FOOT NOMINAL FIXTURE

- 4FT-L16W** | White 16W LED Light Engine | Delivered Lumens: 1,627
- 4FT-L28W** | White 28W LED Light Engine | Delivered Lumens: 2,848
- 4FT-L56W** | White 56W LED Light Engine | Delivered Lumens: 5,695
- Cust_Out_4FT** |

Lumen Calculator: Enter Lumens or Watts if different than displayed

LU Min 1627 - Max 5695

W Min 16.0 - Max 56.0

5 FOOT NOMINAL FIXTURE

- 5FT-L20W** | White 20W LED Light Engine | Delivered Lumens: 2,034
- 5FT-L35W** | White 35W LED Light Engine | Delivered Lumens: 3,560
- 5FT-L71W** | White 71W LED Light Engine | Delivered Lumens: 7,221
- Cust_Out_5FT** |

Lumen Calculator: Enter Lumens or Watts if different than displayed

LU Min 2034 - Max 7221

W Min 20.0 - Max 71.0

6 FOOT NOMINAL FIXTURE

- 6FT-L24W** | White 24W LED Light Engine | Delivered Lumens: 2,441
- 6FT-L42W** | White 42W LED Light Engine | Delivered Lumens: 4,271
- 6FT-L85W** | White 85W LED Light Engine | Delivered Lumens: 8,645
- Cust_Out_6FT** |

Lumen Calculator: Enter Lumens or Watts if different than displayed

LU Min 2441 - Max 8644

W Min 24.0 - Max 85.0

8 FOOT NOMINAL FIXTURE

- 8FT-L32W** | White 32W LED Light Engine | Delivered Lumens: 3,254
- 8FT-L56W** | White 56W LED Light Engine | Delivered Lumens: 5,695
- 8FT-L113W** | White 113W LED Light Engine | Delivered Lumens: 11,492
- Cust_Out_8FT** |

Lumen Calculator: Enter Lumens or Watts if different than displayed

LU Min 3254 - Max 11492

W Min 32.0 - Max 113.0

[See last page for finish options](#)

*For requests outside Min-Max range, please contact factory.

B - VOLTAGE *

- 120-277V | Universal Voltage

C - LAMP OPTIONS *

- 2700K | 2700K CCT
- 3000K | 3000K CCT
- 3500K | 3500K CCT
- 4000K | 4000K CCT
- 5000K | 5000K CCT

D - CRI *

- DF_90+HE | 90+ High Efficacy

E - MOUNTING *

Additional mounting structure and hardware required (by others). The 8FT-L113W option has a power cord exiting from both sides of the fixture.

- DF_COV | Cove Mount (default)

F - REMOTE POWER SUPPLY ENCLOSURE *

- PSE | Remote Power Supply with Damp Location Enclosure
- PSE-WL | Remote Power Supply with Wet Location Enclosure
- PSE-NONE | Remote Power Supply without Enclosure

G - EMERGENCY

10W, Constant Power Battery Back-up, with 90 minutes of emergency operation. EMR will be included in enclosure specified above.

- EMR ¹ | Emergency Battery Remote

¹ EMR not available with PSE-NONE

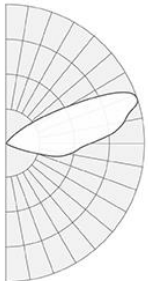
H - OPTICAL DISTRIBUTION *

See IES zip file for photometrics for each distribution.

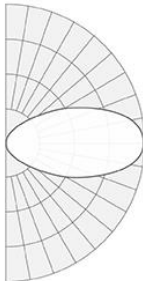
- DF_FT | Forward Throw (default)
- SMA ² | Symmetric 60 Degree Beam - 120 Degree spread
- SMB ³ | Symmetric 30 Degree Beam - 60 Degree spread

² Delivered lumens are 90% of the output shown under Light Source; see IES file

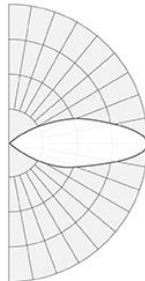
³ Delivered lumens are 104% of the output shown under Light Source; see IES file



FT



SMA



SMB

I - OPTIONS

- F | Fusing

Standard Finishes

The colors shown are representative. Their actual appearance may vary due to differences in display settings. You can request color chips by emailing contact@spilighting.com. Please note, finishes may not be available in all configurations.

Anodized



Specialty Finishes



More RAL®, Pantone®, and custom finishes are available upon request. Setup fee and additional lead time applies. Call factory for details.