

# Tryg Exterior Wall - Indirect

SEW11279 27.80 in

JOB NAME:

TYPE:

NOTES:

## DESCRIPTION

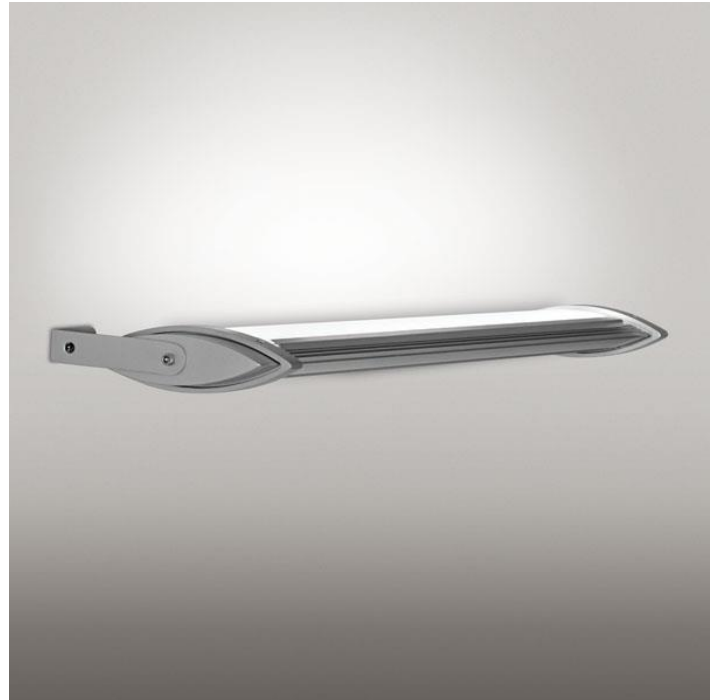
Tryg, a low profile LED fixture, offers a unique design and durability suitable for any project. Its creative design acts as an efficient heat sink, maximizing output and life by allowing the LEDs to operate at an optimal temperature. Tryg is suitable for a variety of applications, and its flexible design lends itself to customization and modification.

## FEATURES & BENEFITS

- All visible fasteners are flush mounted, providing a clean design
- Locks in desired orientation for precise fixture alignment
- Anodized finish provides optimal thermal effectiveness and durable corrosion protection
- Versatile design allows fixture to be mounted in any orientation
- Handcrafted in USA

## SPECIFICATIONS

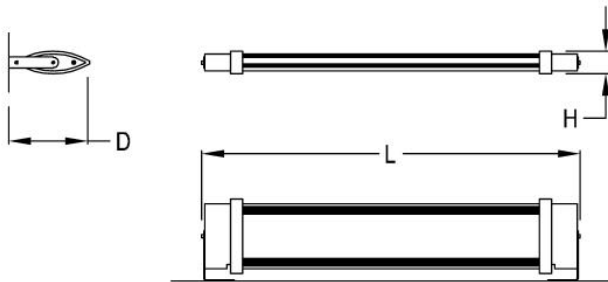
- **LIGHT SOURCE:** White LED light engine
- **CRI:** 90+HE
- **LUMEN MAINTENANCE:** L80 = >60,000 Hrs at 38°C ambient temperature
- **EFFICACY:** 82 lm/W delivered
- **CCT:** 2700K, 3000K, 3500K, 4000K, 5000K
- **DRIVER:** Includes remote Class 2 power supply and either a damp location or wet location enclosure. Black weatherproof power cord with watertight fittings. 36" lead length standard.
- **DIMMING:** 0-10V controls standard to 1%
- **CONTROLS:** Contact factory for control options (e.g., Lutron Athena, Current NX, nLight, Enlighted, Encelium, Wattstopper, WaveLinx, or Casambi)
- **EMERGENCY:** Remote battery option is provided with 10W Constant Power Battery back-up, providing 90 Minutes of Emergency operation. Contact factory for other Emergency options.
- **DIFFUSER:** Optical grade clear acrylic lens optimizes performance
- **CONSTRUCTION:** Extruded aluminum construction provides



durable protection for internal components and is recyclable

- **FINISH:** Housing available in anodized finishes only. Mounting components painted to match.
- **MODIFICATIONS:** Consult factory for all modification requests; including static LED colors
- **APPROVALS:** ETL listed to UL standards (US and Canada) for use in wet locations. IP66 rated fixture per International Electrotechnical Commission (IEC) certifies fixture as dust-tight and protected against powerful water jets.

## DIMENSIONS



H	D	L
1.5 in	5.7 in	27.8 in
3.8 cm	14.5 cm	70.6 cm

**Mounting Weight**  
Approximate: 25 lb (12 kg)

## CONFIGURATOR

To configure your spec sheet online, go to [www.spilighting.com/SEW11279](http://www.spilighting.com/SEW11279). Not all options are available in all configurations; consult factory for details.

### Required Field \*

Catalog	Light Source*	Primary Finish*	Voltage*	Lamp Options*	CRI*	Remote Power Supply Enclosure*	Emergency	Color Accents	Options
SEW11279									
								Finish:	
	A		B	C	D	E	F	G	H

## A - LIGHT SOURCE \*

Alternative wattages available upon request.

- ☐ **L8W** | White 8W LED Light Engine | Delivered Lumens: 657
- ☐ **L14W** | White 14W LED Light Engine | Delivered Lumens: 1,149
- ☐ **L28W** | White 28W LED Light Engine | Delivered Lumens: 2,299
- ☐ **L56W** | White 56W LED Light Engine | Delivered Lumens: 4,598
- ☐ **Cust\_Out** |

**Lumen Calculator:** Enter Lumens or Watts if different than displayed

LU Min 657 - Max 4598

W Min 8.0 - Max 56.0

See last page for finish options

\*For requests outside Min-Max range, please contact factory.

## B - VOLTAGE \*

☐ 120-277V | Universal Voltage

## C - LAMP OPTIONS \*

Apply multiplier from chart for delivered lumens at other CCT's and CRI's.

- ☐ 2700K | 2700K CCT
- ☐ 3000K | 3000K CCT
- ☐ 3500K | 3500K CCT
- ☐ 4000K | 4000K CCT
- ☐ 5000K | 5000K CCT

## D - CRI \*

☐ DF\_90+HE | 90+ High Efficacy

## E - REMOTE POWER SUPPLY ENCLOSURE \*

- ☐ PSE | Remote Power Supply with Damp Location Enclosure
- ☐ PSE-WL | Remote Power Supply with Wet Location Enclosure
- ☐ PSE-NONE | Remote Power Supply without Enclosure

## F - EMERGENCY

10W, Constant Power Battery Back-up, with 90 minutes of emergency operation. EMR includes damp location enclosure for Battery back-up.

☐ EMR | Emergency Battery Remote

## G - COLOR ACCENTS

CA01 available to specify a Color Accent for the narrow band between end cap and extrusion.

☐ CA01 | Color Accent (See last page for finish options)



H - OPTIONS

---

☐ F | Fusing

## Standard Finishes

The colors shown are representative. Their actual appearance may vary due to differences in display settings. You can request color chips by emailing [contact@spilighting.com](mailto:contact@spilighting.com). Please note, finishes may not be available in all configurations.

### Paint Colors

<b>PT01</b> RAL9003 Signal White (Gloss)	<b>PT51</b> Matte White (Textured)	<b>PT02</b> White (Textured)	<b>PT04</b> RAL9001 Cream (Textured)	<b>PT67</b> RAL7044 Silk Grey (Textured)
<b>PT53</b> RAL7035 Light Grey (Textured)	<b>PT54</b> RAL7037 Dusty Grey (Textured)	<b>PT55</b> RAL7012 Basalt Grey (Textured)	<b>PT56</b> RAL7016 Anthracite Grey (Textured)	<b>PT11</b> Black (Textured)
<b>PT57</b> RAL1015 Light Ivory (Textured)	<b>PT58</b> RAL8004 Copper Brown (Textured)	<b>PT59</b> RAL6021 Pale Green (Textured)	<b>PT60</b> RAL1019 Grey Beige (Textured)	<b>PT61</b> RAL7006 Beige Grey (Textured)
<b>PT62</b> RAL1003 Signal Yellow (Textured)	<b>PT63</b> RAL3001 Signal Red (Textured)	<b>PT64</b> RAL6001 Emerald Green (Textured)	<b>PT65</b> RAL5005 Signal Blue (Textured)	<b>PT66</b> RAL5003 Sapphire Blue (Textured)

### Anodized

<b>AN04</b> Anodized	<b>AN08</b> Anodized Black
-------------------------	-------------------------------

### Metallic Paint Colors

<b>PT22</b> Platinum (Metallic Gloss)	<b>PT48</b> Brass (Metallic Textured)	<b>PT28</b> Dark Stainless (Metallic Gloss)	<b>PT49</b> Bronze (Metallic Textured)	<b>PT32</b> Dark Bronze (Metallic Gloss)
<b>PT46</b> Aluminum (Metallic Textured)				

## Specialty Finishes



More RAL®, Pantone®, and custom finishes are available upon request. Setup fee and additional lead time applies.Call factory for details.