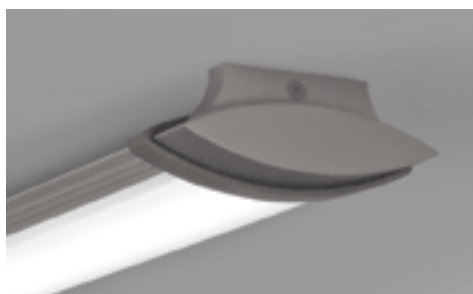


# SECT Tryg Exterior Linear LED

JOB NAME

TYPE

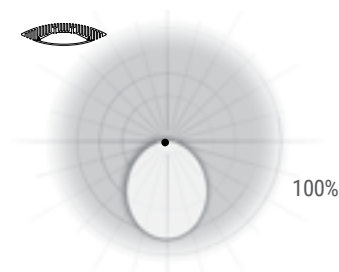
Surface Mount/Suspended  
Remote Power Supply



## Tryg Exterior Linear LED

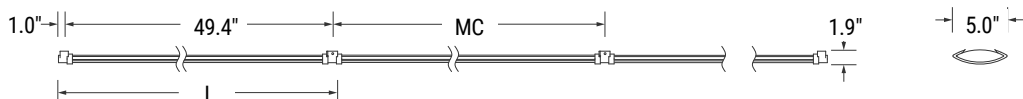
Tryg, a low-profile LED fixture offers a unique design and durability suitable for any project. LEDs enable this luminaire to feature a low-profile housing, while its creative design acts as an efficient heat sink, maximizing output and life by allowing the LEDs to operate at an optimal temperature.

## Optical Distribution

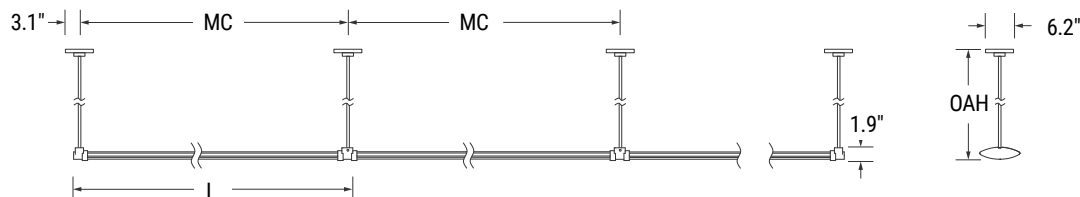


## Run Sections and Suspension

### FBK Fixed Bracket Mount



### CWS Canopy and Stem



## Dimensions

MODULE	MOUNTING CENTER	LENGTH
050	50.0"	51.3"

## Specifications

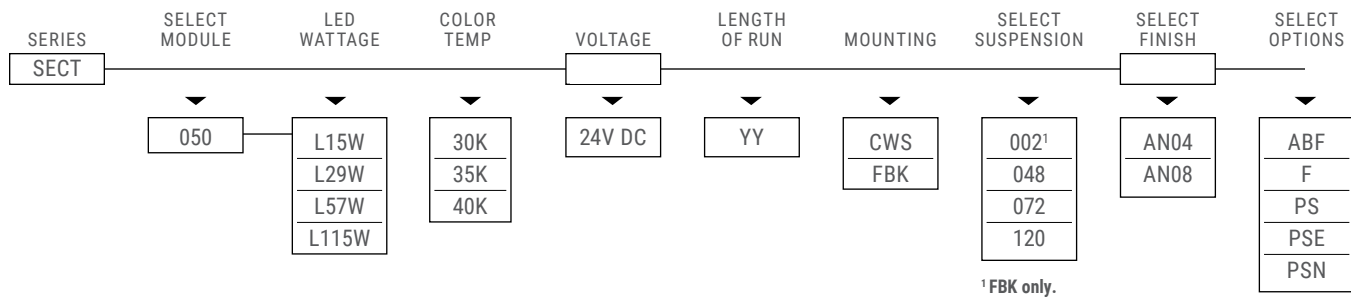
- Lumen maintenance: L80 = >60,000 Hrs at 38°C ambient temperature
- IP66 rated fixture per International Electrotechnical Commission (IEC) certifies fixture as dust tight and protected against power water jets.
- Available in anodized finishes with some parts painted to match. Anodized finish provides optimal thermal effectiveness and durable corrosion protection.
- CA01 available to specify a Color Accent for the narrow band between end cap and extrusion.

- Each module requires connection to a 24V constant voltage power supply. Modules over 60W may require multiple power supplies/feeds.
- SPI Lighting uses strict guidelines in LED selection to ensure the white LEDs we use meet or exceed ANSI Binning Standards (ANSI C78.377).
- Black power cord standard unless otherwise specified.
- RELATED LINKS:  
[LED Power Supplies \(24V DC\)](#)  
["Designed to be LED"](#)

## Technical Notes

- INSTALLATION NOTES: During installation the contractor is responsible to use actual fixtures to ensure accurate mounting centers from one fixture to the next along the length of the linear run.
- ETL listed to UL standards (US and Canada) for use in wet locations.
- Remote Class II Power Supply required with LED lamping.
- Max distance to the driver is 15' (includes OAH). For extended distances, contact factory.





## Delivered Lumens

050			
L15W	L29W	L57W	L115W
1232	2381	4680	9442

Delivered lumens are shown at 4000 CCT; apply multiplier for delivered lumens at other CCT.

CCT	Proration Factor
4000K	1.0
3500K	0.97
3000K	0.95

## Mountings and Options

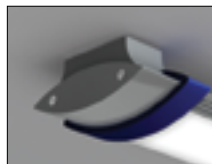
Painted to match



CWS



FBK



CA01 (Shown with PT33)

## Code Definitions

MOUNTING	FINISHES (See Color Chart for Details)	OPTIONS
FBK Fixed Bracket	AN04 Anodized Aluminum (Clear)	CA01 Color Accent (painted)
CWS 6.2" Canopy & Stem	AN08 Black Anodized	F Fusing
		PS Remote Power Supply
		PSE Power Supply Enclosure
		PSN No Power Supply