

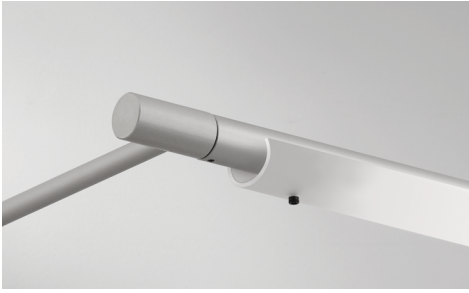
# SLWB Beam Linear LED

JOB NAME

TYPE

## Wall

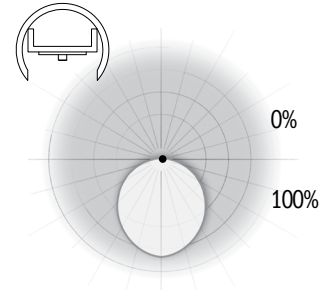
Remote Power Supply



### Beam Linear LED

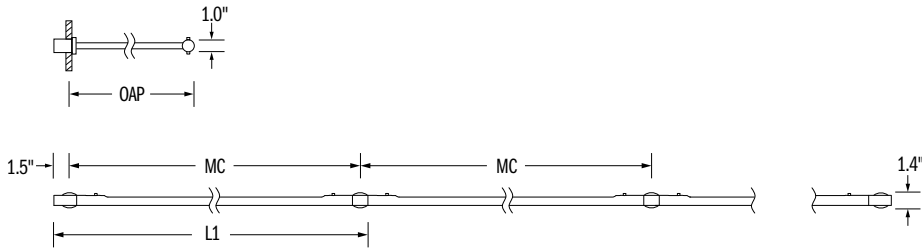
Beam delivers quality illumination in an award-winning fixture. It's ultra-slim 1" housing blends into any environment, and this model features a remote power supply. Mount it individually or configure linear runs. Its standard 18" projection can be shortened to meet ADA requirements. Beam's multiple shielding options and four sizes make this low-profile fixture adaptable to many applications. The family includes wall and ceiling mounted luminaires and is ETL damp location listed.

### Optical Distribution



### Run Sections and Projections

#### ICS Canopy and Stem



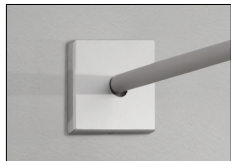
### Dimensions

MODULE	MOUNTING CENTER		SINGLE FIXTURE LENGTH	
	MC		L1	
029	29.0"		32.0"	
041	41.0"		44.0"	
053	53.0"		56.0"	
065	65.0"		68.0"	

### Mountings



ICS 1.4" Canopy and Stem



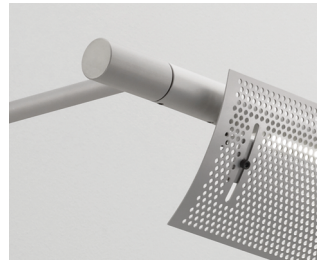
LBC 4" Octagon Box



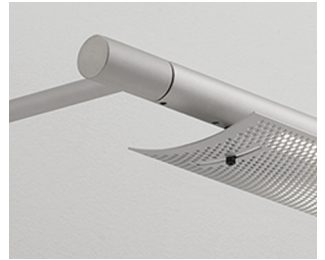
SBC Switch-Box Cover

### Shielding Options

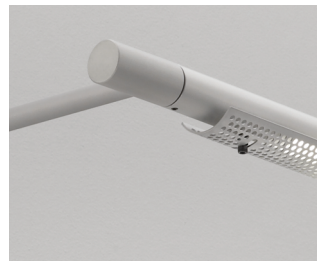
Fixture shown with 18" overall projection.



APS Asymmetric Perforated Screen



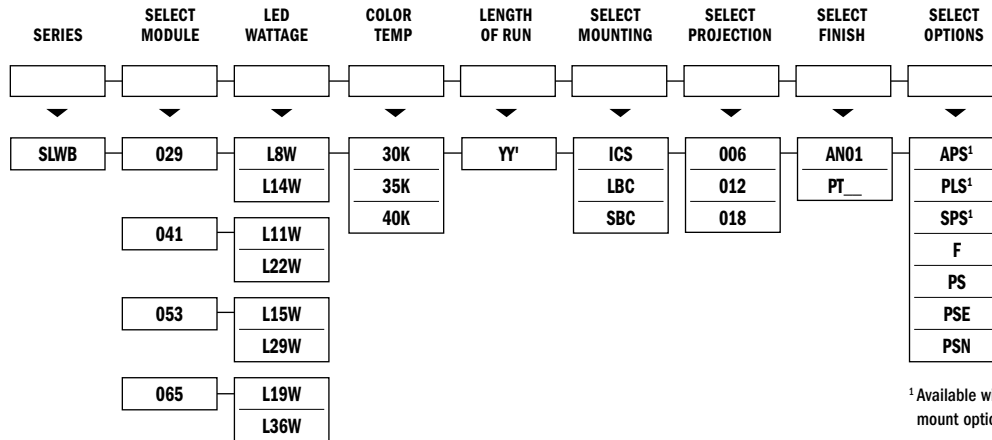
SPS Symmetric Perforated Screen



PLS Perforated Lamp Screen

**Sample Model Number:** SERIES MODULE LAMPING TEMP RUN MOUNTING PROJECTION FINISH OPTIONS

SLWB



<sup>1</sup> Available with stem mount options only.

**Delivered Lumens**

SMB	029		041		053		065	
	L8W	L14W	L11W	L22W	L15W	L29W	L19W	L36W
	720	1260	990	1980	1350	2610	1710	3240

Delivered lumens are shown at 4000 CCT; apply multiplier for delivered lumens at other CCT.

CCT	Proration Factor
4000K	1.0
3500K	0.97
3000K	0.95

**Code Definitions**

MOUNTING	PROJECTION	FINISHES <i>(See Color Chart for Details)</i>	OPTIONS
<b>ICS</b> 1.4" Mini Canopy and Stem	<b>006</b> 6.0"	<b>AN01</b> Anodized Satin Aluminum	<b>APS</b> Asymmetric Perforated Screen
<b>LBC</b> 4" Octagon Box	<b>012</b> 12.0"	<b>PT_</b> Powder Coat Finish	<b>PLS</b> Perforated Lamp Screen
<b>SBC</b> Switch-Box Cover	<b>018</b> 18.0"		<b>SPS</b> Symmetric Perforated Screen
			<b>F</b> Fusing
			<b>PS</b> Remote Power Supply
			<b>PSE</b> Power Supply Enclosure
			<b>PSN</b> No Power Supply

**Specifications:**

- Standard thermoset polyester powder coat paint provides durable protection in a palette of color options. Custom colors available upon request.
- Field adjustable housing locks into position, enabling precise fixture alignment for high quality design performance.
- Lamp body can be rotated up to 330° for application specific aiming.
- SPI Lighting uses strict quality guidelines in LED selection to ensure the white LEDs we use meet or exceed ANSI Binning Standards (ANSI.C78.377).

- INSTALLATION NOTES:** During installation the contractor is responsible to use actual fixtures to ensure accurate mounting centers from one fixture to the next along the length of the linear run.
- Translucent shield supplied on all LED options.
- 0-10V dimming controls standard to 1% with PS option.
- Related Links:**  
[LED Power Supplies](#)  
["Designed to be LED"](#)

**Technical Notes:**

- 1" diameter extruded tube with aluminum end caps.
- ETL listed to UL standards (US and Canada) for use in damp locations. Not recommended for exterior applications.
- Remote Class II Power Supply required with LED lampings.
- Max distance to the driver is 15' (includes OAH). For extended distances, contact factory.
- L70 => 50,000+ hours

